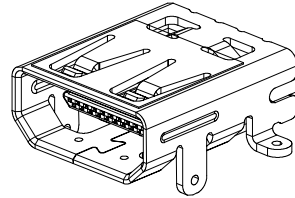
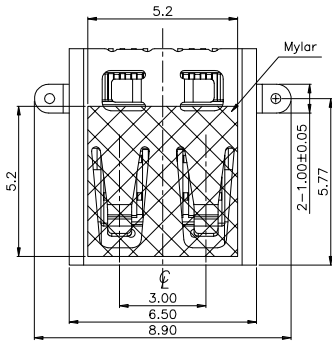


RoHS Compliant

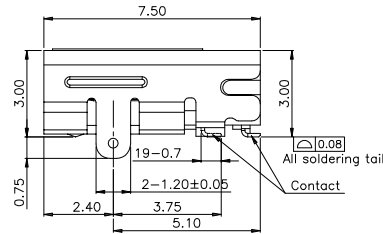
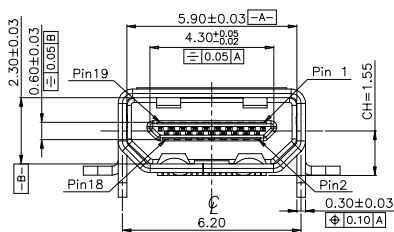
REVISIONS			
REV.	DESCRIPTION	DATE	DESIGN



PIN	Signal Assignment	PIN	Signal Assignment
1	Hot Plug Detect	2	Utility
3	TMDS Data2+	4	TMDS Data2 Shield
5	TMDS Data2-	6	TMDS Data1+
7	TMDS Data1 Shield	8	TMDS Data1-
9	TMDS Data0+	10	TMDS Data0 Shield
11	TMDS Data0-	12	TMDS Clock+
13	TMDS Clock Shield	14	TMDS Clock-
15	CEC	16	DDC/CEC Ground
17	SCL	18	SDA
19	+5V Power		

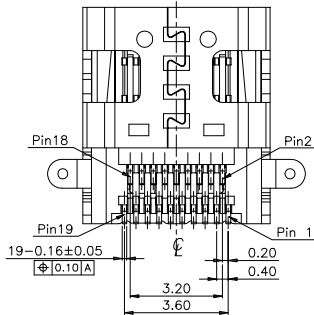
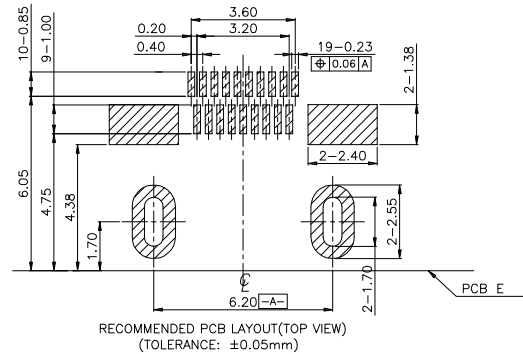
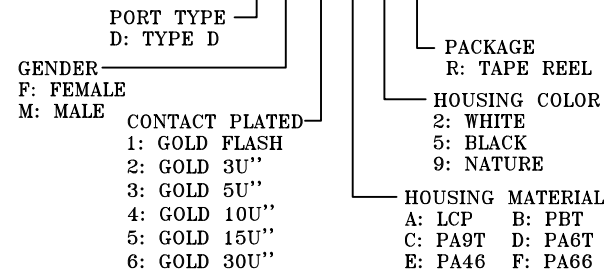
NOTE:

- MATERIALS AND FINISHED
INSULATOR : LCP BK UL-94V0,
COVER:LCP UL-94V0
SHELL : BRASS, NICKEL PLATED
CONTACT MATERIAL : BRASS, SELEVITE GOLD FINISHED
- ELECTRICAL CHARACTERISTICS
CONTACT CURRENT RATING : 0.5 AMPS
CONTACT VOLTAGE RATING:40VAC
CONTACT RESISTANCE :20 MILLIOHMS MAX.
DIELECTRIC WITHSTANDING VOLTAGE : 500 V ACMIN.
INSULATION RESISTANCE : 100 MEGAOHMS MIN.
- MECHANICAL
MATING FORCE:4.5Kgf MAX.
UNMATING FORCE:1.0 Kgf MIN
DURABILITY LIFE: 5,000 Cycles;
- ENVIRONMENTAL
TEMPERATURE RATING : -20°C ~ +85°C
- HOW TO ORDER:



PART NO. INFORMATION

HD01-D F X X 5 R - 002-V1



Bestcreate Technology Limited

TOLERANCES UNLESS OTHERWISE SPECIFIED:

X.	± 0.50	X.'	± 3'
.X	± 0.25	.X'	± 2'
.XX	± 0.15	.XX'	± 1'

Tel/Whatsapp:0086-13712299763
Skype: belle.wu3340

DESIGN: I. L DATE: 2017. 3. 1

CHECKED: C. W DATE: 2017. 3. 1

APPROVED: C. W DATE: 2017. 3. 1

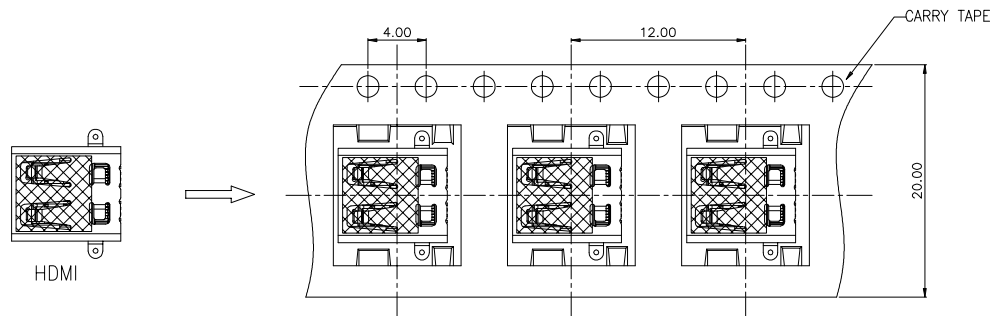
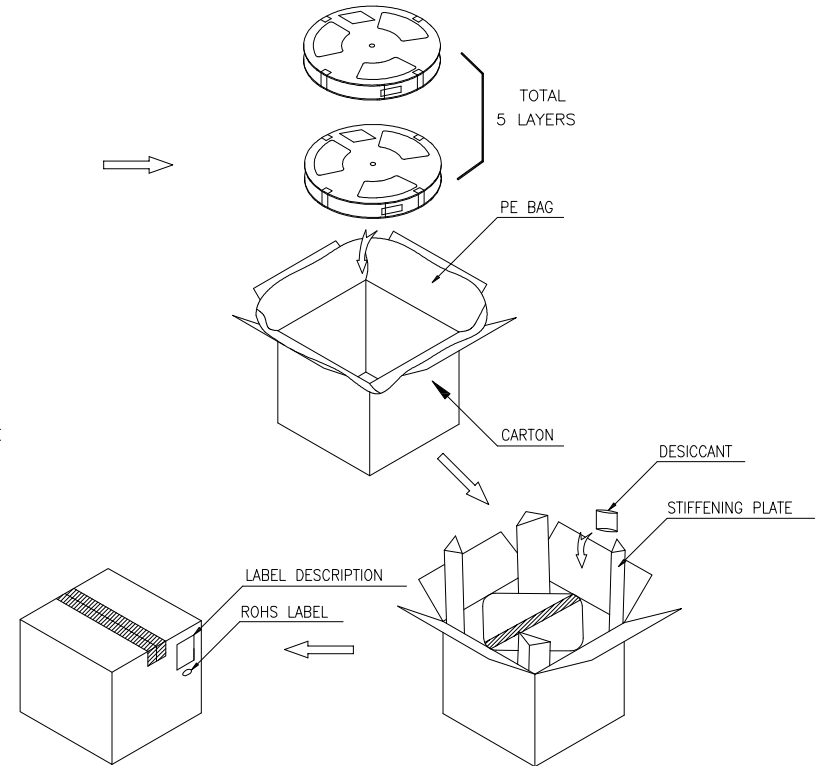
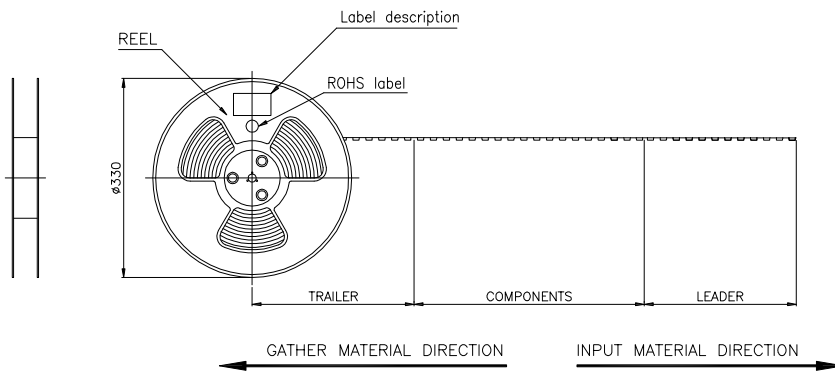
TITLE: **HDMI D TYPE FEMALE SMT**

MATERILA:	PART NO: HD01-DFX5R-002-V1	SIZE: A4
FINISH:	DWG NO: HD01-DFX5R-002-V1	

REV: A	UNIT mm	SCALE 1=1	QUALITY SYMBOLS
--------	---------	-----------	-----------------

RoHS Compliant

REVISIONS			
REV.	DESCRIPTION	DATE	DESIGN



Notes:

1. The start and end of each reel, based on the actual quantity, reserved 10--15pcs space;
2. Peel off force of top tape: 10g~130g, peel deg.:165°~175°; peel speed: 250~300mm/min;
3. Carton size: 350*350*155mm.
4. QTY: 1000pcs/reel, 5reel/carton, total 5000pcs/carton;

Bestcreate Technology Limited

TOLERANCES UNLESS OTHERWISE SPECIFIED:

X.	± 0.50	X."	± 3"
.X	± 0.25	.X"	± 2"
.XX	± 0.15	.XX"	± 1"

DESIGN: I. L
DATE: 2017. 3. 1

CHECKED: C. W
DATE: 2017. 3. 1

APPROVED: C. W
DATE: 2017. 3. 1

TITLE: **HDMI D TYPE FEMALE SMT**

MATERILA: PART NO: HD01-DFXX5R-002-V1
SIZE: A4

FINSH: DWG NO: HD01-DFXX5R-002-V1

REV: A	UNIT mm	SCALE 1=1	QUALITY SYMBOLS
--------	---------	-----------	-----------------

Tel/Whatsapp:0086-13712299763
Skype: belle.wu3340

1

2

3

4

5

6

7

8