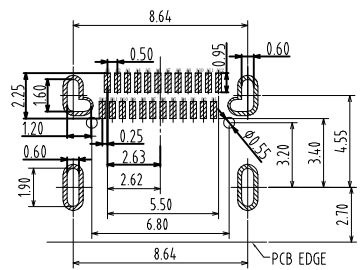
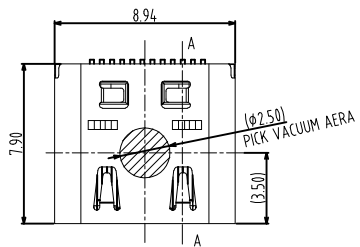
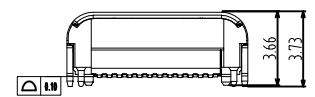
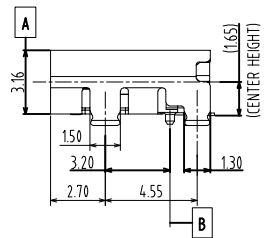
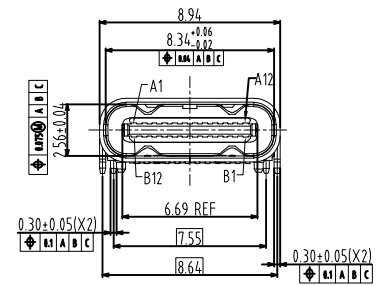


RoHS Compliant

REVISIONS			
REV.	DESCRIPTION	DATE	DESIGN



RECOMMENDED P.C.B. LAYOUT  
TOLERANCE UNSPECIFIED ±0.05mm



FOR ALL SMT CONTACT TAILS BEFORE REFLOW 0.08MAX. AFTER REFLOW 0.10MAX.

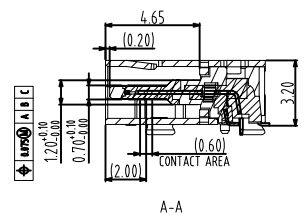
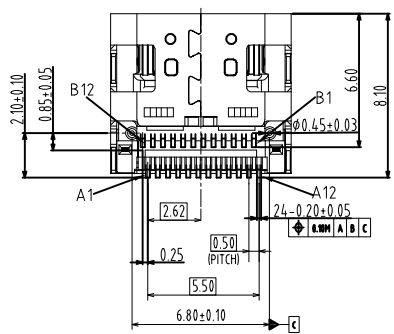
NOTES:

- MATERIAL: SEE TABLE "A"
- FINISH: SEE TABLE "A"
- ELECTRICAL CHARACTERISTICS:
  - CONTACT RESISTANCE: 40mΩ Max FOR INITIAL. 10mΩ CHANGE AFTER TEST. MEASURE AT 20mV, 100mA.
  - CONTACT CURRENT RATING: 5A FOR VBUS PIN; 1.25A FOR VCONN PIN.
  - DIELECTRIC WITHSTANDING VOLTAGE: 100V AC R.M.S.
  - INSULATION RESISTANCE 100MΩ Min
  - OPERATING TEMPERATURE: -30°C ~ 85°C
- MECHANICAL CHARACTERISTICS:
  - MATING FORCE: 5 ~ 20 N.
  - UNMATED FORCE: 8 ~ 20N AFTER TEST
  - DURABILITY: 10,000 CYCLES
- PICKING AREA

PART NO. INFORMATION

U06-C F X X X 5 X - 068

- PORT TYPE  
C: TYPE C
- GENDER  
F: FEMALE  
M: MALE
- CONTACT PLATED  
1: GOLD FLASH  
2: GOLD 3U"  
3: GOLD 5U"  
4: GOLD 10U"  
5: GOLD 15U"  
6: GOLD 30U"
- PACKAGE  
T: TRAY R: TAPE REEL
- HOUSING COLOR  
2: WHITE  
5: BLACK  
9: NATURE
- HOUSING MATERIAL  
A: LCP B: PBT  
C: PA9T D: PA6T  
E: PA46 F: PA66



A1	A2	A3	A4	A5	A6	A7	A8	A9	A10	A11	A12
GND	TX1+	TX1-	Vbus	CC1	D+	D-	SBU1	Vbus	RX2-	RX2+	GND
GND	RX1+	RX1-	Vbus	SBU2	D-	D+	CC1	Vbus	TX2-	TX2+	GND
B12	B11	B10	B9	B8	B7	B6	B5	B4	B3	B2	B1

NO.	DESCRIPTION	MATERIAL AND FINISH	QTY
5	SHELL	STAINLESS STEEL, NI PLATED	1
4	MID PLATE	STAINLESS STEEL, NI PLATED	1
3	BOT CONTACT	COPPER ALLOY CONTACT AREA: Au	12
2	TOP CONTACT	SOLDER AREA: GOLD FLASH, ALL OVER NI PLATED	12
1	HOUSING	HIGH TEMPERATURE PLASTIC, BLACK, UL94V-0	1
NO.	DESCRIPTION	MATERIAL AND FINISH	QTY

**Bestcreate Technology Limited**

TOLERANCES UNLESS OTHERWISE SPECIFIED:

.X	± 0.30	X.*	± 2"
.XX	± 0.20	.XX*	± 1"
.XXX	± 0.10	.XXX*	± 0.5"

DESIGN: I. L  
DATE:  
CHECKED: C. W  
DATE:  
APPROVED: C. W  
DATE:

TITLE: USB 4.0 TYPE C 24P FEMALE CONNECTOR DUAL SMT, L=7.9MM, 40G  
MATERIAL: PART NO: U06-CFXX5X-068 SIZE: A4  
FINISH: DWG NO: U06-CFXX5X-068 1 OF 3

REV: A UNIT mm SCALE 1=1 QUALITY SYMBOLS Website: www.bsc-elec.com Email: bestcreate@bsc-elec.com