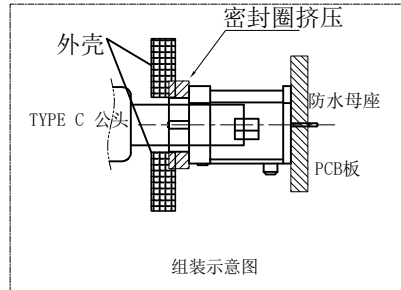
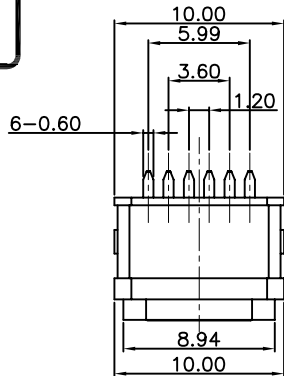
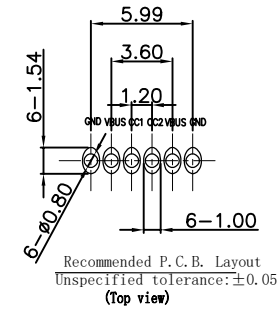


RoHS Compliant



REVISIONS			
REV.	DESCRIPTION	DATE	DESIGN



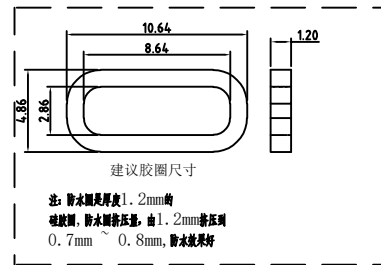
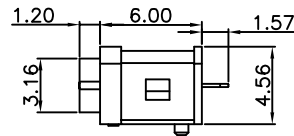
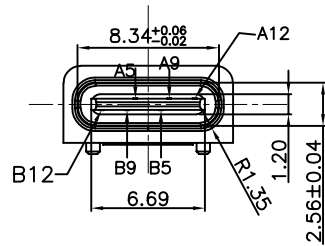
RECOMMENDED PCB LAYOUT(TOP VIEW)

THICKNESS T=1.0mm
DEFAULT TOLERANCE+/-0.05

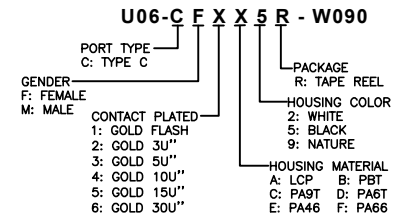
NOTES:

SPECIFICATION:

- CURRENT RATING: 3.0A MAX
- DIELECTRIC WITHSTAND VOLTAGE: 100VAC
- TEMPERATURE RANGE: -30 °C ~ 85 °C
- CONTACT RESISTANCE: 40 MILLIONHM MAX
- INSULATION RESISTANCE: 100 MEGOHMS MIN.
- INSERTION FORCE : 5N~20N
- UNMATING FORCE: 8N~20N
- DURABILITY:5000 CYCLES



PART NO. INFORMATION



ITEM	PART NAME	Q' TY	FINISH	NOTE
4	Shell1	1	SUS301 Ni Plating T=0.25mm	Ni:40~120u'';
3	Housing2	1	LCP(G.F30%)	
2	Contact	5	Phosphor bronze C5210R-EH Au/Ni Plating T=0.20mm	Ni:40~160u''; Au: CONTACT AREA:3u'', OTHER AREA:G/F
1	Housing	1	PA9T (G.F30%)	

A5	CC1	B12	GND
A9	VBUS	B9	VBUS
A12	GND	B5	CC2
PIN	SIGNAL NAME	PIN	SIGNAL NAME

Bestcreate Technology Limited

TOLERANCES UNLESS OTHERWISE SPECIFIED:

X.	± 0.50	X.'	± 5'
.X	± 0.30	.X'	± 2'
.XX	± 0.10	.XX'	± 1'

DESIGN:

I. L

DATE:

CHECKED:

C. W

DATE:

APPROVED:

C. W

TITLE:

IPX8 WATERPROOF 6P USB C FEMALE CONNECTOR DIP TYPE

MATERILA:

FINSH:

PART NO:

U06-CFXX5R-W090

DWG NO:

U06-CFXX5R-W090

SIZE:

A4

1 OF 1

REV:

A

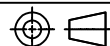
UNIT

mm

SCALE

1=1

QUALITY SYMBOLS



Website:www.bsc-elec.com

Email:bestcreate@bsc-elec.com

1

2

3

4

5

6

7

8