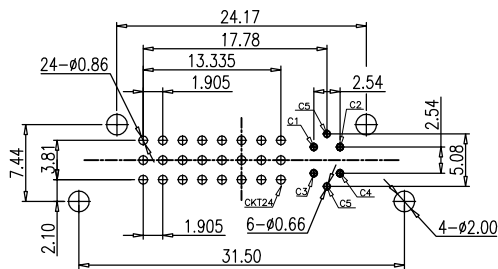
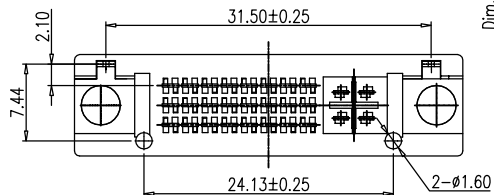
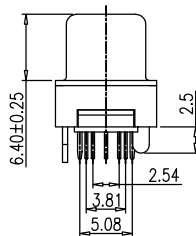
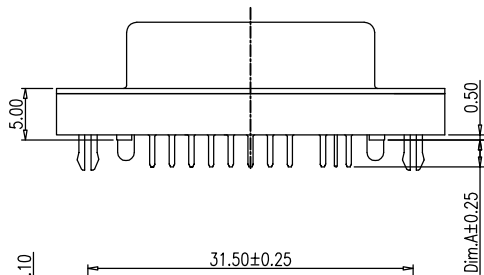
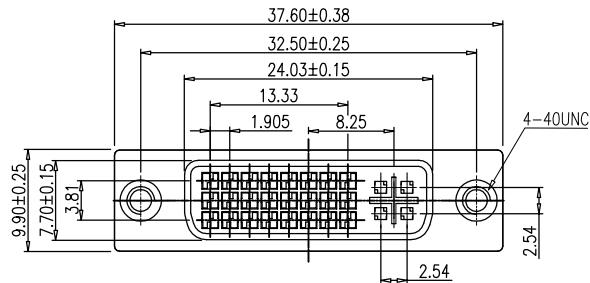


RoHS Compliant

REVISIONS			
REV.	DESCRIPTION	DATE	DESIGN



RECOMMENDED P.C.B LAYOUT

NOTE:

- 1.MATERIALS AND FINISHED
INSULATOR : PA66 +30%GF UL 94V-0,
SHELL : STEEL, FINISHED SEE PART NO.
CONTACT MATERIAL : BRASS, SELEVITE GOLD FINISHED
RIVETED INSERT: BRASS MATERIAL ,TIN FINISHED
WITH #4-40 THREADED ASSEMBLED
- 2.ELECTRICAL CHARACTERISTICS
CURRENT RATING : 1.5 AMP DC
VOLTAGE RATING: 40 V DC
CONTACT RESISTANCE :20 MILLIOHMS MAX.
DIELECTRIC WITHSTANDING VOLTAGE : 500 V AC MIN.
INSULATION RESISTANCE : 1000 MEGAOHMS MIN.
- 3.MECHANICAL
MATING FORCE:4.5Kgf MAX.
UNMATING FORCE:1.0-4.0 Kgf
- 4.ENVIRONMENTAL
OPERATING TEMPERATURE: -55°C ~ +85°C
STORAGE TEMPERATURE:-55°C ~ +105°C
- 5.HOW TO ORDER:

DVFS4-245XXXXN-XX3X0

Female

S2: Straight Pin
(W/Plastic Column)

180: 18+0Pin
240: 24+0Pin
245: 24+5Pin

S: Selevite Gold Bright TIN

1:G/F" 3: 3u"
2:2u" 6: 10u" 7: 15u"

1. Front NI Back SN
2. Front Gold Back SN
5. Full NI

0: RoHs

1: 3.10(Dim.A=2.6)
3: 4.40(Dim.A=3.9)

3: Rivet 4.90

0: None

1: 4.8*8.5 Copper Screws
2: 4.8*8.5 Steel Screws
G: 5.8*9.5 Copper Screws
H: 5.8*9.5 Steel Screws

A: No screw type
B: Ass'y screw type
C: Attach screw type

N: PA66

B: Black

W: White

Bestcreate Technology Limited

TOLERANCES UNLESS OTHERWISE SPECIFIED:

.X	± 0.38	X.*	± 3"
.XX	± 0.25	.X*	± 2"
.XXX	± 0.15	.XX*	± 1"

Website:www.bsc-elec.com
Email:bestcreate@bsc-elec.com

DESIGN: I.L DATE: 2017.3.1

CHECKED: C.W DATE: 2017.3.1

APPROVED: C.W DATE: 2017.3.1

TITLE:

DVI (24+5) CONNECTOR 180D PCB MOUNT

MATERILA:	PART NO: DVFS4-245XXXXN-XX3X0	SIZE: A4
FINSH:	DWG NO: DVFS4-245XXXXN-XX3X0	

REV: A	UNIT mm	SCALE 1=1	QUALITY SYMBOLS
--------	---------	-----------	-----------------