

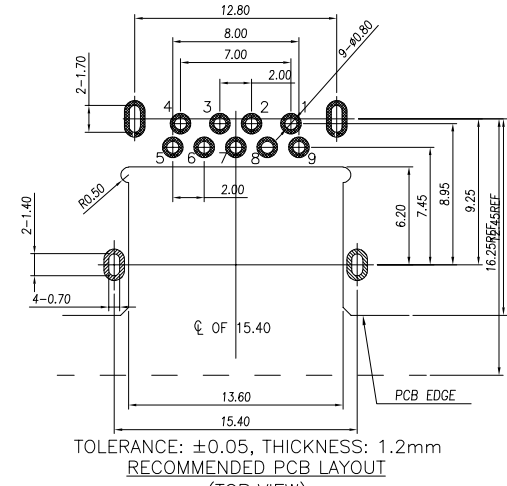
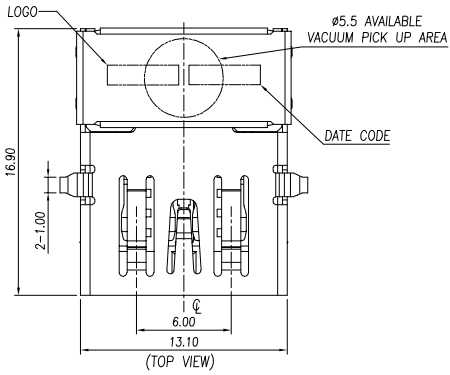
RoHS Compliant

REVISIONS

REV.	DESCRIPTION	DATE	DESIGN

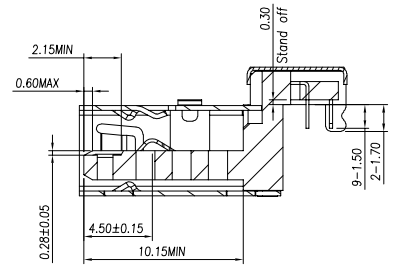
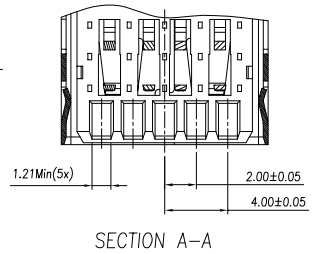
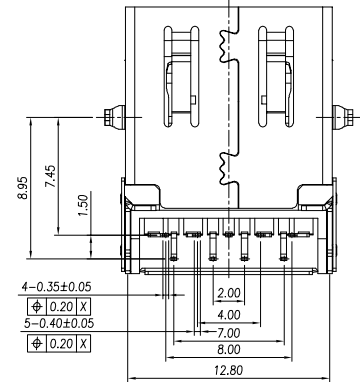
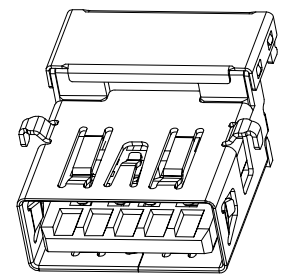
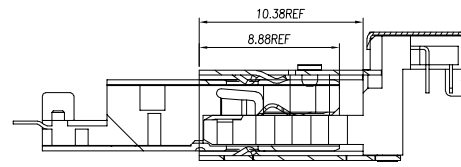
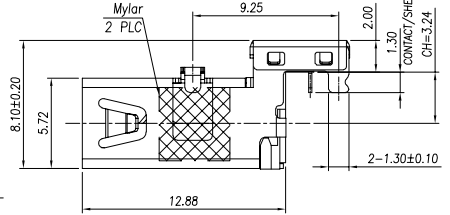
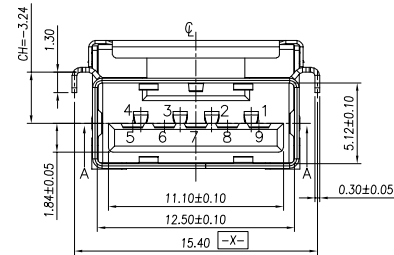
NOTE:

- 1.MATERIAL:  
 1.1 INSULATOR:PA9T,COLGR BLACK  
 1.2 4PIN CONTACT:C5191(T=0.20mm)  
 1.3 SHELL:SUS304(T=0.30mm)  
 1.4 COVER:SUS201(T=0.20mm)  
 2.ELECTRICAL CHARACTERISTICS:  
 2.1 Current Rating:1.8  
 2.2 Insulation Resistance:100MΩ Min  
 2.3 Contact Resistance:30mΩ Max  
 2.4 Dielectric Withstanding Voltage:500V AC  
 2.5 OPERATING TEMPERATURE:-40°C ~ 85°C  
 3. MECHANICAL CHARACTERISTICS:  
 3.1 MATING FORCE:35 N Max  
 3.2 UNMATED FORCE:10 N Min INITIAL; 8 N Min AFTER TEST  
 3.3 DURABILITY:5,000 CYCLES  
 4.PLATING SPECIFICATION:  
 4.1 CONTACTS:Ni 50u" MIN. UNDER PLATED,GOLD FLASH PLATED ON THE MATING AREA OF CONTACT.  
 MATTE Sn 100u" MIN. PLATED ON THE SOLDER TALL.  
 4.2 FRONT SHELL:Ni 50u"MIN. UNDER PLATED OVER ALL.  
 4.3 Salt Spray 48H  
 5.ROHS2+HF



TOLERANCE: ±0.05, THICKNESS: 1.2mm  
 RECOMMENDED PCB LAYOUT

(TOP VIEW)  
 KEEP OUT AREA



Pin #	SIGNAL NAME
1	VBUS
2	D-
3	D+
4	GND
5	StdA_SSRX-
6	StdA_SSRX+
7	GND_DRAIN
8	StdA_SSTX-
9	StdA_SSTX+
Shell	Shield

PART NO. INFORMATION

**U03-A F X A X X -5022**

- PORT TYPE  
 A: TYPE A
- GENDER  
 F: FEMALE  
 M: MALE
- CONTACT PLATED  
 1: GOLD FLASH  
 2: GOLD 3U"  
 3: GOLD 5U"  
 4: GOLD 10U"  
 5: GOLD 15U"  
 6: GOLD 30U"
- PACKAGE  
 T: TRAY R:TAPE REEL
- HOUSING COLOR  
 2: WHITE  
 5: BLACK  
 9: BLUE
- HOUSING MATERIAL  
 A: LCP B: PBT  
 C: PA9T D: PA6T  
 E: PA46 F: PA66

**Bestcreate Technology Limited**

TOLERANCES UNLESS OTHERWISE SPECIFIED:

X.	± 0.30	X.*	± 3*
.X	± 0.20	.X*	± 2*
.XX	± 0.15	.XX*	± 1*

DESIGN: I.L DATE: 2017.3.1

CHECKED: C.W DATE: 2017.3.1

APPROVED: C.W DATE: 2017.3.1

TITLE: USB 3.0 TYPE A 9P H=8.20MM, CH=-3.24MM REC, RVS, DIP TYPE

MATERILA: PART NO: U03-AFXAXX-5022 SIZE: A4

FINSH: DWG NO: U03-AFXAXX-5022 SHEET: 1 OF 2

REV: A UNIT mm SCALE 1=1 QUALITY SYMBOLS

Website: www.bsc-elec.com  
 E-mail: bestcreate@bsc-elec.com