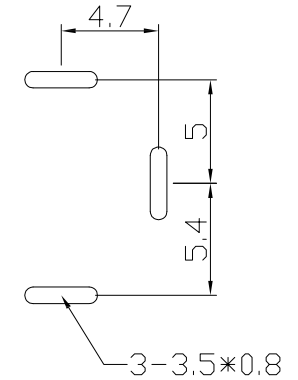
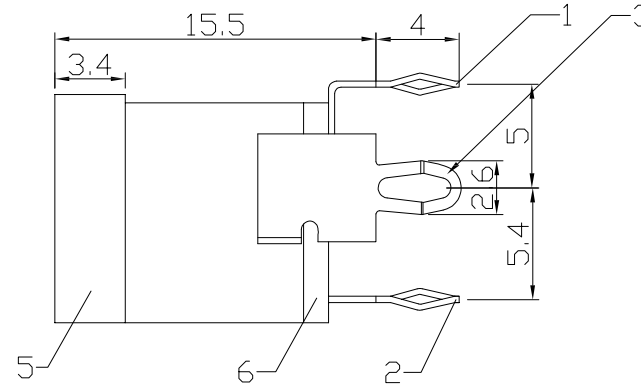
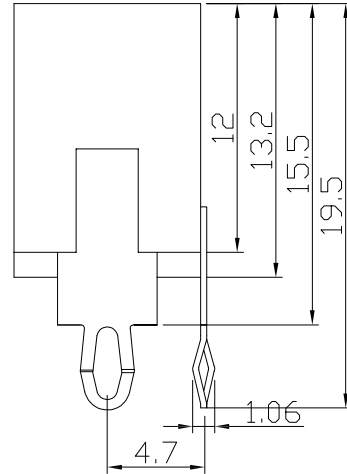
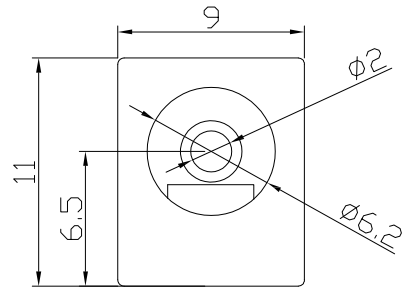


RoHS Compliant

REVISIONS			
REV.	DESCRIPTION	DATE	DESIGN



技术要求  
 使用条件: -40-55°C  
 额定负荷: DC 12V 1A  
 接触电阻: ≤0.03Ω  
 绝缘电阻: ≥100MΩ DC 250V  
 耐压: AC 500V (50Hz)/min  
 插拔力: 3-20N  
 机械寿命: 5000次

PIN	φ2.0	φ2.35	φ2.5
APPD.			

NO.	DESCRIPTION	MATERIAL	QTY	PLATING
8				
7				
6	COVER	PCB	1	NATURE
5	PIN	BRASS	1	Ag-PLATED
4	CONTACT FOOT	BRASS	1	Ag-PLATED
3	SPRING	SUS301	1	Nature
2	FLAT PIECE	BRASS	1	Ag-PLATED
1	HOUSING	PBT	1	BLACK

**Bestcreate Technology Limited**

TOLERANCES UNLESS OTHERWISE SPECIFIED:

X.	± 0.50	X.'	± 3'
.X	± 0.30	.X'	± 2'
.XX	± 0.10	.XX'	± 1'

DESIGN: I. L. DATE: 2017. 3. 1

CHECKED: C. W. DATE: 2017. 3. 1

APPROVED: C. W. DATE: 2017. 3. 1

TITLE: DC POWER SOCKET CONNECTOR

MATERILA: FINSH: DWG NO: DC-013 SIZE: A4

APPD. DC-013

REV: A UNIT mm SCALE 1=1 QUALITY SYMBOLS

Website: www.bsc-elec.com Email: bestcreate@bsc-elec.com