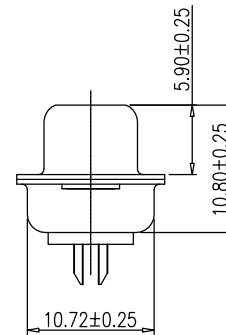
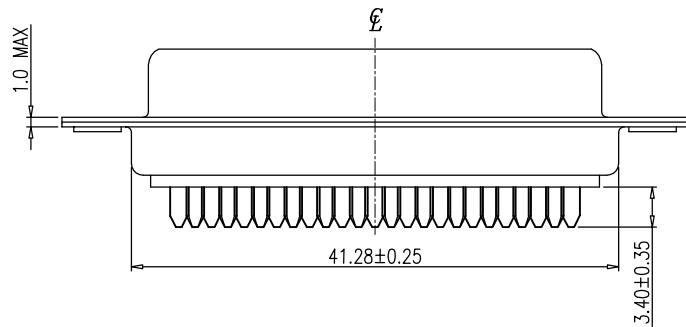
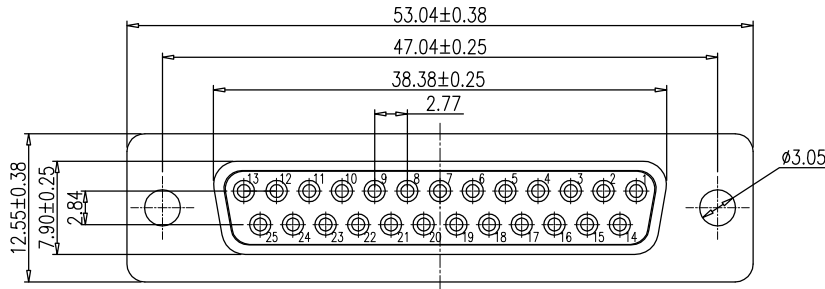


RoHS Compliant

REVISIONS			
REV.	DESCRIPTION	DATE	DESIGN



NOTE:

- MATERIALS AND FINISHED  
INSULATOR : PBT+30% GF UL 94V-0,  
SHELL : STEEL, NI OR SN FINISHED  
CONTACT MATERIAL : BRASS, SELEVITE GOLD FINISHED  
RIVETED INSERT: BRASS MATERIAL ,TIN FINISHED  
WITH #4-40 THREADED ASSEMBLED
- ELECTRICAL CHARACTERISTICS  
CURRENT RATING : 3.0 AMP DC  
VOLTAGE RATING: 250 V DC  
CONTACT RESISTANCE :30 MILLIOHMS MAX.  
DIELECTRIC WITHSTANDING VOLTAGE : 1000 V AC MIN.  
INSULATION RESISTANCE : 1000 MEGAOHMS MIN.
- ENVIRONMENTAL  
OPERATING TEMPERATURE: -55°C ~ +85°C  
STORAGE TEMPERATURE:-55°C ~ +105°C
- HOW TO ORDER:

DBF121-25XXXXP-A0X10

Female

09:9Pin 25:25PIN  
15:15Pin 37:37PIN

G:Full Gold  
S:Selevite Gold Bright TIN

1:G/F" 3: 3u"  
2:2u" 6: 10u"

1. Front NI Back SN  
3. Full Sn  
5. Full NI

0: RoHs

7:Front rivet Solid nut(Iron)  
5:Front rivet Solid nut(Copper)  
2:Front rivet hollow nut(Copper)  
1:Back rivet hollow nut(Copper)  
0:3.05 through Hole

A:No screw type  
(Riveting Type)

P:PBT

L: Light blue  
U: Blue(661C)  
B: Black  
W: White

**Bestcreate Technology Limited**

TOLERANCES UNLESS OTHERWISE SPECIFIED:

.X	± 0.35	.X"	± 3"
.XX	± 0.25	.X"	± 2"
.XXX	± 0.15	.XX"	± 1"

Website:www.bsc-elec.com  
Email:bestcreate@bsc-elec.com

DESIGN: I. L DATE: 2017.3.1

CHECKED: C. W DATE: 2017.3.1

APPROVED: C. W DATE: 2017.3.1

TITLE: DB-25P FEMALE CONNECTOR FOR WIRE SOLDERING

MATERILA: PART NO: DBF121-25XXXXP-A0X10 SIZE: A4

FINSH: DWG NO: DBF121-25XXXXP-A0X10

REV:	UNIT	SCALE	QUALITY SYMBOLS
A	mm	1=1	