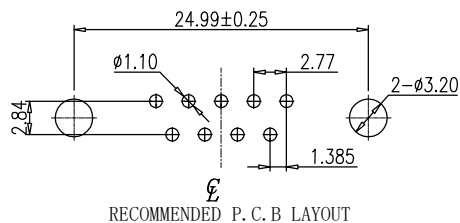
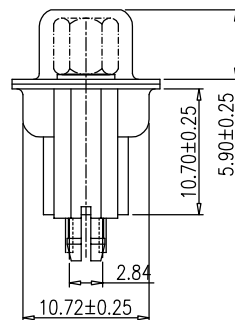
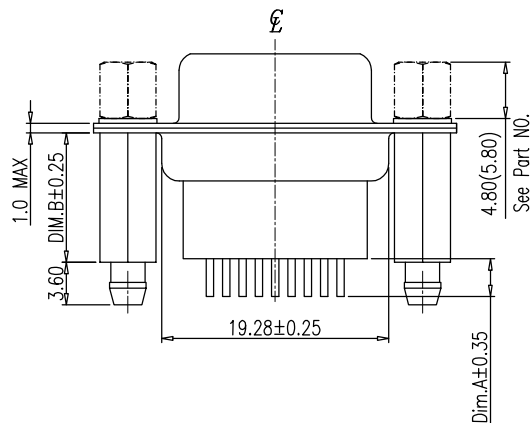
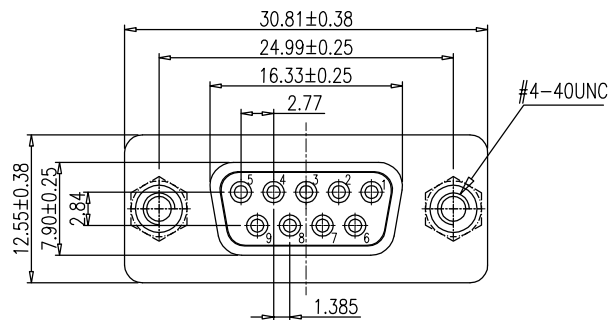


RoHS Compliant

REVISIONS			
REV.	DESCRIPTION	DATE	DESIGN



NOTE:

- MATERIALS AND FINISHED
INSULATOR : PBT+30% GF UL 94V-0,
SHELL : STEEL, NI OR SN FINISHED
CONTACT MATERIAL : BRASS, SELEVITE GOLD FINISHED
RIVETED INSERT: BRASS MATERIAL ,TIN FINISHED
WITH #4-40 THREADED ASSEMBLED
- ELECTRICAL CHARACTERISTICS
CURRENT RATING : 3.0 AMP DC
VOLTAGE RATING: 250 V DC
CONTACT RESISTANCE :30 MILLIOHMS MAX.
DIELECTRIC WITHSTANDING VOLTAGE : 1000 V AC MIN.
INSULATION RESISTANCE : 1000 MEGAOHMS MIN.
- ENVIRONMENTAL
OPERATING TEMPERATURE: -55°C ~ +85°C
STORAGE TEMPERATURE:-55°C ~ +105°C
- HOW TO ORDER:

DPF111-09XXXXP-XXXX0

Female

09:9Pin 25:25PIN
15:15Pin 37:37PIN

G:Full Gold

1:G/F 5: 5u"
2:2u" 6: 10u" 8: 30u"
3:3u" 7: 15u" 9: 1u"

1. Front Ni Back SN
3. Full Sn
5. Full Ni

L: Light blue
U: Blue(661C)
B: Black

P:PBT

0: RoHS

6: Dim.A=7.2
3: Dim.A=5.0
2: Dim.A=4.0
1: Dim.A=3.2

L:4.7*15.0(Dim.B)*19.9 Copper Pillar
K:4.7*14.5(Dim.B)*19.4 Copper Pillar
G:4.7*14.0(Dim.B)*18.9 Copper Pillar
E:4.7*13.0(Dim.B)*17.9 Copper Pillar
B:4.7*12.0(Dim.B)*16.9 Copper Pillar
7:4.7*11.0(Dim.B)*15.9 Copper Pillar

K:5.8*12.8 Hexagonal screw(iron)
J:5.8*12.8 Hexagonal screw(copper)
6:4.8*11.8 Hexagonal screw(iron)
5:4.8*11.8 Hexagonal screw(copper)
0:W/O screw

C:Attach screw type
B:Assy screw type
A:No screw type(Rivet)

Bestcreate Technology Limited

TOLERANCES UNLESS OTHERWISE SPECIFIED:

.X	± 0.35	X."	± 3"
.XX	± 0.25	.X"	± 2"
.XXX	± 0.15	.XX"	± 1"

Website:www.bsc-elec.com
Email:bestcreate@bsc-elec.com

DESIGN: I. L DATE: 2017. 3. 1

CHECKED: C. W DATE: 2017. 3. 1

APPROVED: C. W DATE: 2017. 3. 1

TITLE: DP-09P FEMALE CONNECTOR

MATERILA: PART NO: DPF111-09XXXXP-XXXX0 SIZE: A4

FINSH: DWG NO: DPF111-09XXXXP-XXXX0

REV: A UNIT mm SCALE 1=1 QUALITY SYMBOLS