

RoHS Compliant

## REVISIONS

REV.	DESCRIPTION	DATE	DESIGN

## Features:

- 1.01~06 circuits available;
2. Material: PBT+30%GF UL 94V-0
3. Accepts H3960S11 terminal;
4. Mates with H3960S13 H3960S14 header
5. Color: Black

## Specification:

NO of Pins	16 AWG	18 AWG	20 AWG	22 AWG
1	15 A	13 A	11 A	9 A
2	14 A	12 A	10 A	8 A
3	12 A	10 A	8 A	7 A
4	10 A	8 A	7 A	6 A
5	10 A	8 A	7 A	6 A
6	10 A	8 A	7 A	6 A

Current rating: 15A.

Voltage rating: 600V AC(RMS) or 600V DC.

Contact resistance: 10mΩ Max.

Insulation resistance: 1000MΩ Min.

Withstanding voltage: 1500V AC/minute.

Ambient temperature range: -55°C~+80°C.

## Dimensional Information(mm)

NO of Pins	DIM A	DIM B	DIM C	DIM D
01	3.96	6.20	4.60	5.20
02	3.96	8.36	5.50	6.10
03	7.92	12.32	7.50	9.10
04	11.80	16.28	7.50	9.90
05	15.84	20.24	10.00	12.50
06	19.80	24.20	10.00	12.50

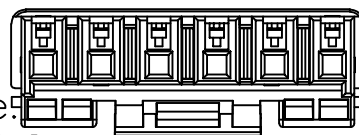
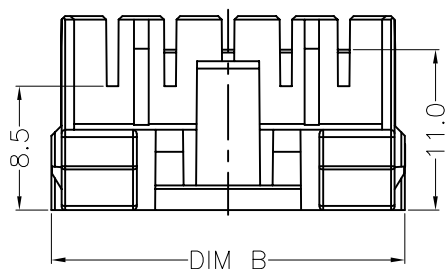
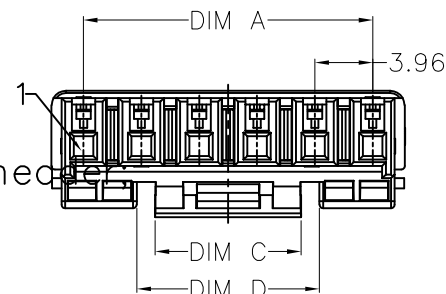
## PART NO. INFORMATION

H3960S12-XX

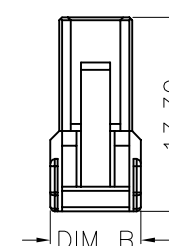
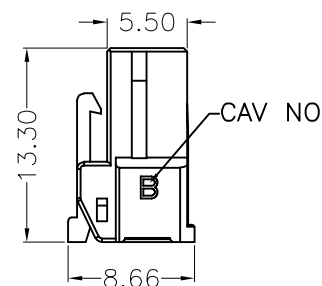
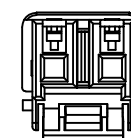
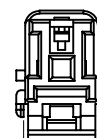
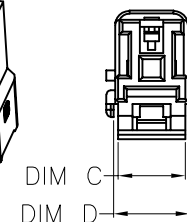
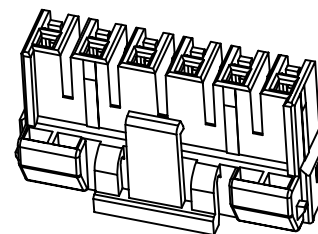
SERIES NO: \_\_\_\_\_

PIN Q'PY: \_\_\_\_\_

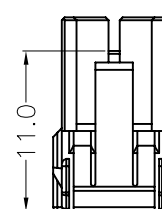
01~06



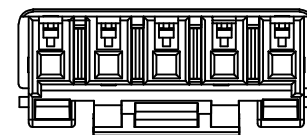
6 CKTS



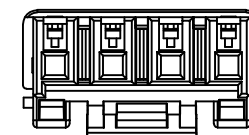
1 CKTS



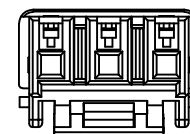
2 CKTS



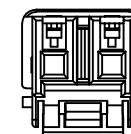
5 CKTS



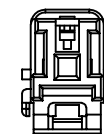
4 CKTS



3 CKTS



2 CKTS



1 CKTS

Bestcreate Technology Limited

## TOLERANCES UNLESS OTHERWISE SPECIFIED:

.X	±	0.40	X.	±	3'
.XX	±	0.25	.X.	±	2'
.XXX	±	0.15	.XX.	±	1'

Website: [www.bsc-elec.com](http://www.bsc-elec.com)Email: [bestcreate@bsc-elec.com](mailto:bestcreate@bsc-elec.com)

DESIGN: \_\_\_\_\_

DATE: \_\_\_\_\_

I. L. \_\_\_\_\_

CHECKED: \_\_\_\_\_

DATE: \_\_\_\_\_

C. W. \_\_\_\_\_

APPROVED: \_\_\_\_\_

DATE: \_\_\_\_\_

C. W.  
2018.3.5

TITLE:

3.96 mm wire to Board housing

MATERIAL:

PART NO:

H3960S12-XX

SIZE:

A4

FINISH:

DWG NO:

H3960S12-XX

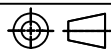
REV: A

UNIT

mm

SCALE

1=1

QUALITY  
SYMBOLS

1

2

3

4

5

6

7

8