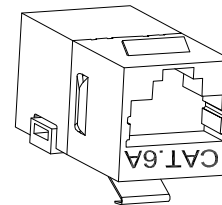
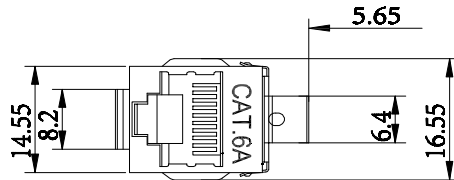
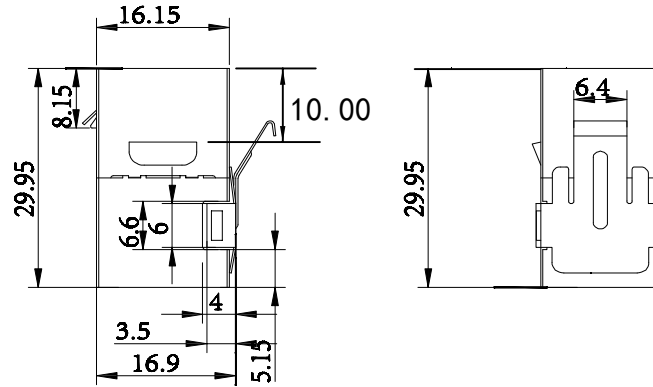
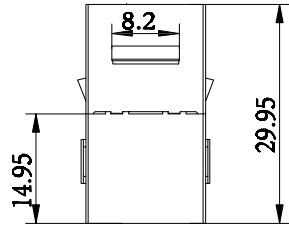
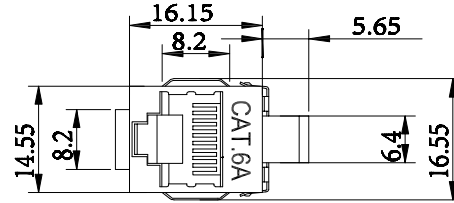


RoHS Compliant

REVISIONS			
REV.	DESCRIPTION	DATE	DESIGN



MATERIAL:

HOUSING: ABS,UL94V-0 .

TERMINAL:ROUND Ø0.46MM 3U

SHIELD: C2680,T=0.20MM,20 MIN NICKEL PLATING ON ALL AREA.

MACHANICAL:

DURABILITY: 750 CYCLES MIN,12.5MM/MINUTE.

OPERATING TEMPERATURE: -20 °C~+75 °C.

STORAGE TEMPERATURE: -40癈~+85癈.

ALL CRITICAL DIMENSIONS WITH "*"

ELECTRICAL:

VOLTAGE: 125 VOLTS AC.

CURRENT RATING :1.5AMP.

DIELECTRIC STRENGTH: 1000 VAC RMS 50HZ OR 60HZ,1MIN.

INSULATION RESISTANCE: 500 MEGA OHMS MIN @ 500V DC.

CONTACT RESISTANCE: 30 MILLIOHMS MAX.

***ROHS APPROVED**

Bestcreate Technology Limited

TOLERANCES UNLESS OTHERWISE SPECIFIED:

X.	± 0.35	X.*	± 3'
.X	± 0.30	.X*	± 2'
.XX	± 0.25	.XX*	± 1'

Website:www.bsc-elec.com
Email:bestcreate@bsc-elec.com

DESIGN:

DATE:

I. L

2017. 3. 1

CHECKED:

DATE:

C. W

2017. 3. 1

APPROVED:

DATE:

C. W

2017. 3. 1

TITLE:

RJ45 8P8C CAT. 6A STP ADAPTER, L=30MM

MATERILA:

PART NO:

STP-S-5966-CAT-6A-30MM

SIZE:

A4

FINSH:

DWG NO:

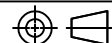
STP-S-5966-CAT-6A-30MM

REV: A

UNIT mm

SCALE 1=1

QUALITY SYMBOLS



1

2

3

4

5

6

7

8