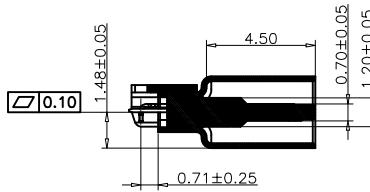
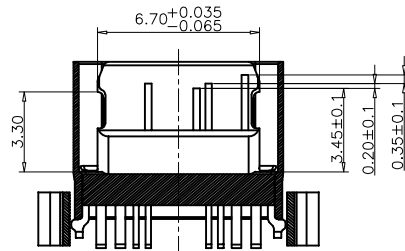
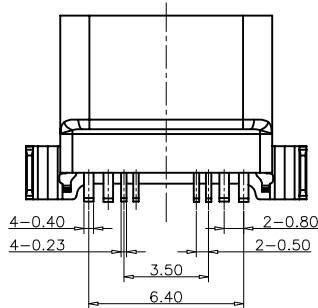
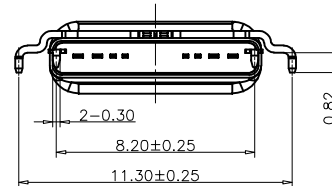
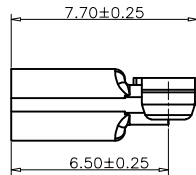
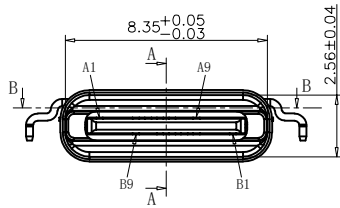
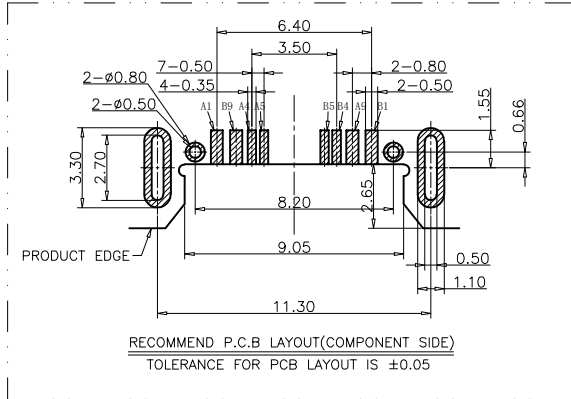
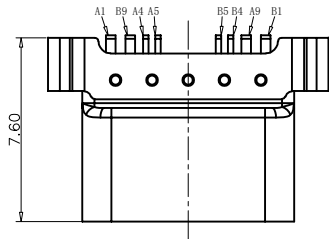


RoHS Compliant



SECTION A-A
SCALE 1:1

SECTION B-B
SCALE 1:1

REVISIONS			
REV.	DESCRIPTION	DATE	DESIGN

NOTE:
 1. ELECTRICAL:
 1.1. CONTACT: CONTACT RESISTANCE 40mΩ Max, 10mΩ LESS OR MORE IS ALLOWED.
 TEST CONDITION: 20mv, 100mA .
 1.2. CURRENT ON CONTACT: 3A VBUS PIN-OUT; 1.25A FOR GND ; 0.25A FOR OTHERS.
 1.3. RATED VOLTAGE: 30V.
 1.4. WITHSTAND VOLTAGE: 100VR. M. S.
 1.5. INSULATION RESISTANCE: AT LEAST 100megohm .
 2. MECHANICAL:
 3.1. MATING FORCE: 0.51-2.04Kg
 3.2. UNMATING FORCE: 0.82-2.04Kg
 3.3. DURABLENESS: 0.61-2.04Kg
 3.4. LIFETIME: 10000 TIMES.
 4. WORKING TEMPERATURE: -20°C to +85°C.

USB TYPE C PIN ASSIGNMENTS

PIN NUMBER	SIGNAL NAME	PIN NUMBER	SIGNAL NAME
A1	GND	B9	VBUS
A4	VBUS		
A5	CC1		
		B5	CC2
A9	VBUS	B4	VBUS
		B1	GND

PART NO. INFORMATION

U06-C F X X 5 R - W031

PORT TYPE: TYPE C
 GENDER: F: FEMALE, M: MALE
 CONTACT PLATED: 1: GOLD FLASH, 2: GOLD 3U'', 3: GOLD 5U'', 4: GOLD 10U'', 5: GOLD 15U'', 6: GOLD 30U''
 PACKAGE: R: TAPE REEL
 HOUSING COLOR: 2: WHITE, 5: BLACK, 9: NATURE
 HOUSING MATERIAL: A: LCP, B: PBT, C: PA9T, D: PA6T, E: PA46, F: PA66

TABLE:

NO	PART	Q'TY	Material
1	SHELL-1	1	STAINLESS STEEL, Ni PLATED 30u"Min
2	SHELL-2	1	STAINLESS STEEL, Ni PLATED 30u"Min
3	CONTACT	8	COPPER STEEL, Ni 50u"Min; Au u"
4	MID PLATE	1	STAINLESS STEEL, NO PLATING
5	MD HOUSING	1	HIGH TEMPERATURE RESISTANT PLASTIC BLACK UL94 V-0

TOLERANCES UNLESS OTHERWISE SPECIFIED:		DESIGN: I. L	DATE:	TITLE: IPX7 WATERPROOF 8P USB TYPE C FEMALE CONNECTOR, L=7.60mm
.XX ± 0.20	.X' ± 5"	CHECKED: C. W	DATE:	MATERILA:
.XX ± 0.15	.X' ± 2"	APPROVED: C. W	DATE:	PART NO: U06-CFXX5R-W031
.XXX ± 010	.XX' ± 1"	Website: www.bsc-elec.com		SIZE: A4
		Email: bestcreate@bsc-elec.com		FINSH: DWG NO: U06-CFXX5R-W031

Bestcreate Technology Limited

REV: A UNIT mm SCALE 1=1 QUALITY SYMBOLS