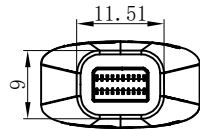
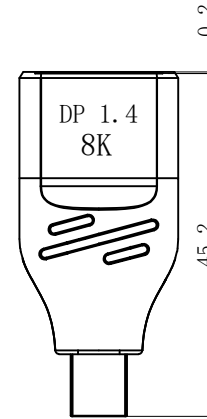
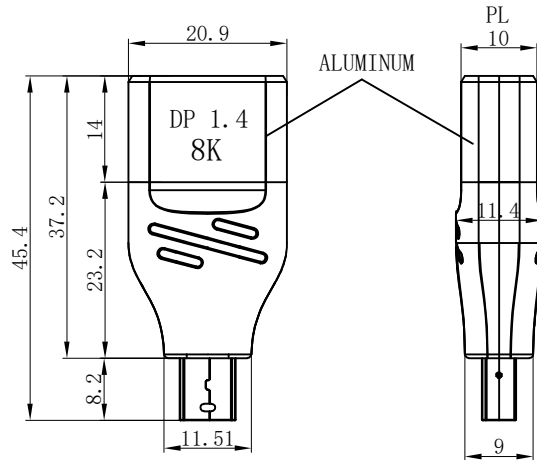
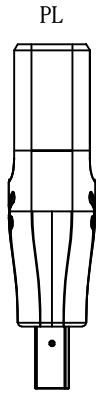
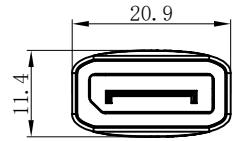


RoHS Compliant

REVISIONS			
REV.	DESCRIPTION	DATE	DESIGN



WIRING TABLE

P1	P2
1	1
3	3
2	2
4	4
6	6
5	5
7	7
9	9
8	8
10	10
12	12
11	11
14	14
19	19
17	17
13	13
15	15
16	16
18	18
20	20
外壳	外壳

TEST CONDITION:

- a. 100% SHORT CIRCUIT/OPEN CIRCUIT TEST.
- b. DC:300V AC:200V INSULATION RESISTANCE:10MΩ
- c. CONDUCTOR RESISTANCE : ≤5Ω
- d. 8K\*4K 60HZ VEDIO AND AUDIO TEST.

ITEM	MATERIAL	SPECIFICATION	UNIT	QTY
7	PACKAGE	SELF SEAL ZIPPER PE BAG	pcs	1
6	PVC MATERIAL	45P CAL65 N18P ENVIRONMENTAL MATERIAL	g	6
5	PE MATERIAL	PE LOW DENSITYPE INTERNAL MOLD MATERIAL	g	3
4	ALUMINUM SHELL	BLACK ALUMINUM SHELL20.9mm*10.1mm*11mm NETC LOGO	pcs	2
3	PCBA	4 LAYER PCBA	pcs	1
2	CONNECTOR	DP 1.4 FEMALE CONNECTOR, 1U' ON CONTACT, STRADDLE MOUNT	PCS	1
1	CONNECTOR	MINI DP 1.4 MALE CONNECTOR, 1U' ON CONTACT, STRADDLE MOUNT	PCS	1

**Bestcreate Technology Limited**

TOLERANCES UNLESS OTHERWISE SPECIFIED:

X.	± 0.50	X'	± 5'
.X	± 0.30	.X'	± 2'
.XX	± 0.10	.XX'	± 1'

Website:www.bsc-elec.com  
Email:bestcreate@bsc-elec.com

DESIGN: I.L DATE: 2017.3.1

CHECKED: C.W DATE: 2017.3.1

APPROVED: C.W DATE: 2017.3.1

TITLE: MINI DP MALE TO DP FEMALE 8K ALUMINUM SHELL ADAPTER

MATERILA: FINSH: PART NO: MNDPMF8K-003 SIZE: A4

DWG NO: MNDPMF8K-003

REV: A UNIT mm SCALE 1=1 QUALITY SYMBOLS