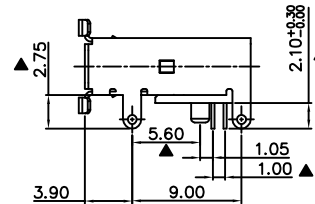
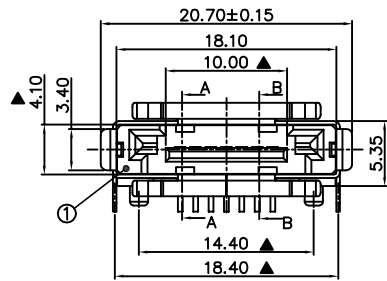
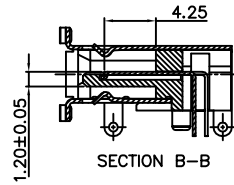
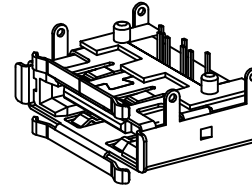
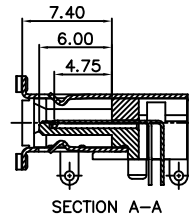
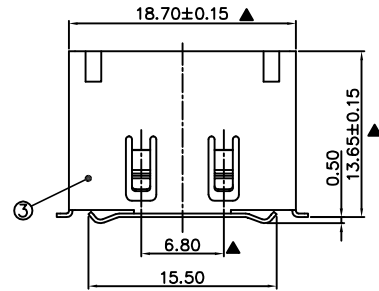


RoHS Compliant

REVISIONS			
REV.	DESCRIPTION	DATE	DESIGN



SPECIFICATION:
1.MATERIAL:
 HOUSING:LCP UL94V-0
 COLOR:BLACK
 CONTACT:BRASS C2680R-H,T=0.25mm
 SHELL:BRASS C2680R-H,T=0.30mm
2.FINISH:
 CONTACT:1u" GOLD/TIN PLATING ON CONTACT AREA
 100u" MIN. TIN PLATING ON SOLDER TAILS
 50u" MIN. NICKEL UNDERPLATING OVERALL
 PEG:100u" MIN. TIN PLATING ON SOLDER TAILS
 50u" MIN. NICKEL UNDERPLATING OVERALL

PART NO. INFORMATION

ESATA - M X A 5 T -001 -V1

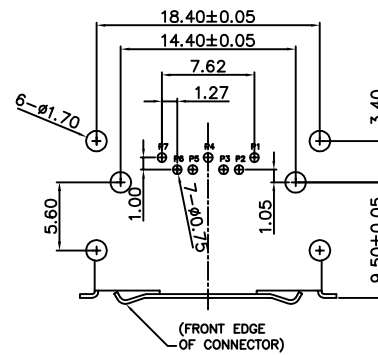
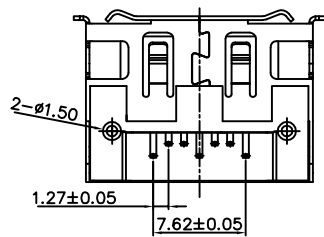
GENDER:
 F: FEMALE
 M: MALE

PACKAGE:
 T: TRAY R:TAPE REEL

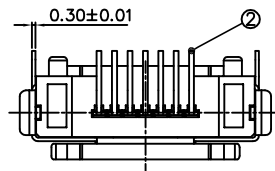
CONTACT PLATED:
 1: GOLD FLASH/TIN
 2: 15U" GOLD/TIN
 3: 30U" GOLD/TIN

HOUSING COLOR:
 5: BLACK

HOUSING MATERIAL:
 A: LCP



RECOMMENDED PC BOARD LAYOUT



3	Shell	Brass C2680 EH		Ni Plated
2	Terminal	Brass C2680 EH		Gold/Tin Plated
1	Housing	High Temp	Black	UL 94V-0
NO.	DESCRIPTION	MATERIAL	COLOR	REMARK

Bestcreate Technology Limited

TOLERANCES UNLESS OTHERWISE SPECIFIED:

X.	± 0.30	X.*	± 3"
.X	± 0.20	.X*	± 2"
.XX	± 0.15	.XX*	± 1"

Website: www.bsc-elec.com
 E-mail: bestcreate@bsc-elec.com

DESIGN: I.L DATE: 2017.3.1

CHECKED: C.W DATE: 2017.3.1

APPROVED: C.W DATE: 2017.3.1

TITLE: E_SATA 7P板上 90° DIP 双排脚

MATERIAL: PART NO: ESATA-MXA5T-001-V1 SIZE: A4

FINISH: DWG NO: ESATA-MXA5T-001-V1 SHEET: 1 OF 1

REV:	UNIT	SCALE	QUALITY SYMBOLS
A	mm	1=1	