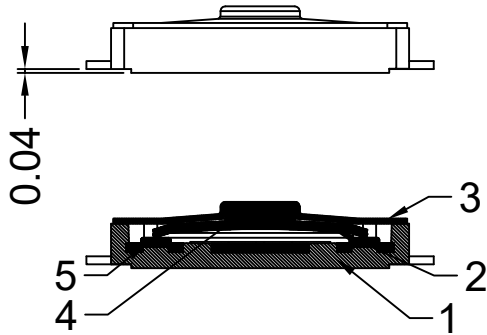
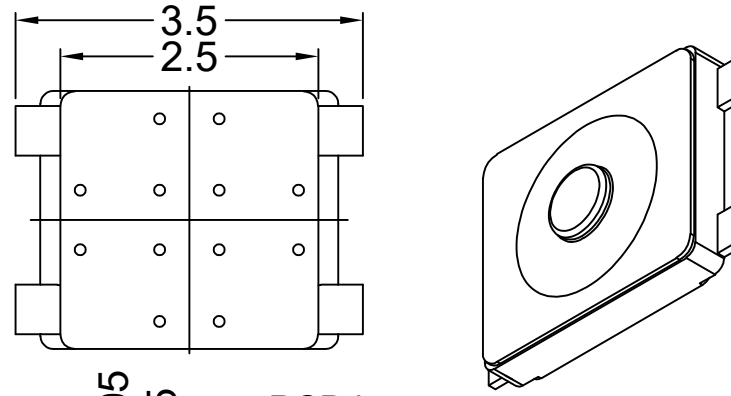
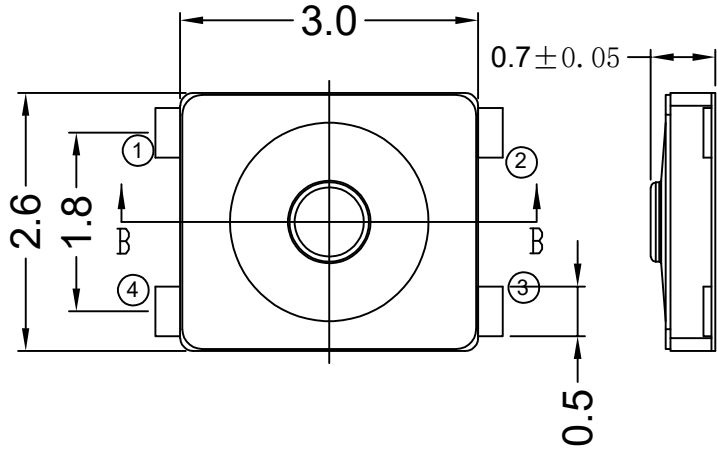
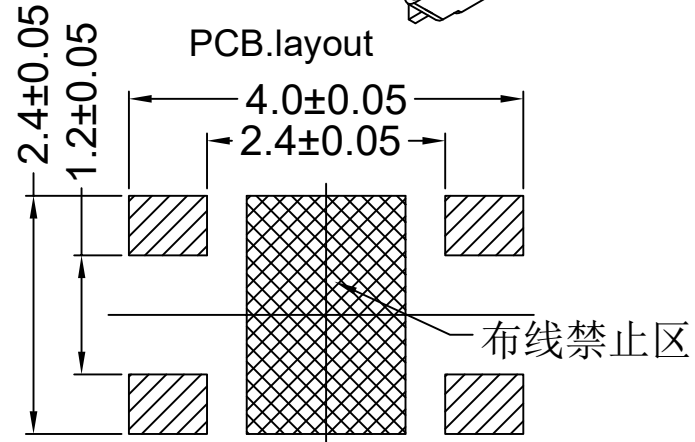
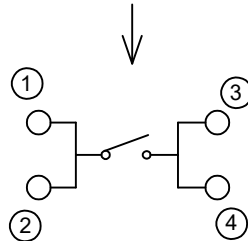


RoHS Compliant

REVISIONS			
REV.	DESCRIPTION	DATE	DESIGN



Circuit Diagram



主要技术指标:

Main Specifications:

正常尺寸公差: ±0.1

气候等级 Climate grade	额定值 Rated values	接触电阻 Contact resistance	耐压 Dielectric strength	绝缘电阻 Insulation resistance	行程 Travel	寿命 Life
-30°C~+85°C	Max50 mA12V DC Min10 μA1V DC	≤100mΩ	100V. AC. 1Min	≥100MΩ	0.12±0.05mm	100000次

序号	名称	数量	材料	备注
5	胶点	1	聚酰亚胺	黑色
4	端子	1	C5191	镀银
3	黄膜	1	聚酰亚胺	黄(透明)
2	弹片	2	SUS301-Ag0.5	单面镀银
1	塑胶底座	1	PA	黑色

Bestcreate Technology Limited

TOLERANCES UNLESS OTHERWISE SPECIFIED:

X.	± 0.45	X.'	± 5'
.X	± 0.35	.X'	± 2'
.XX	± 0.25	.XX'	± 1'

DESIGN: I. L DATE: 2017. 3. 1

CHECKED: C. W DATE: 2017. 3. 1

APPROVED: C. W DATE: 2017. 3. 1

TITLE: TOUCH SWITCH(2630SERIES)

MATERILA:	PART NO: K-W104070A3-D	SIZE: A4
FINSH:	DWG NO: K-W104070A3-D	1 OF 2

Website:www.bsc-elec.com
Email:bestcreate@bsc-elec.com

REV: A	UNIT mm	SCALE 1=1	QUALITY SYMBOLS
--------	---------	-----------	-----------------

RoHS Compliant

REVISIONS			
REV.	DESCRIPTION	DATE	DESIGN

包装流程：图1 图2 图3 图4

图1

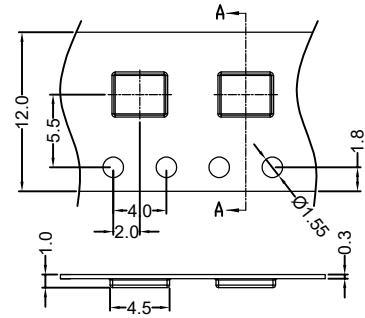
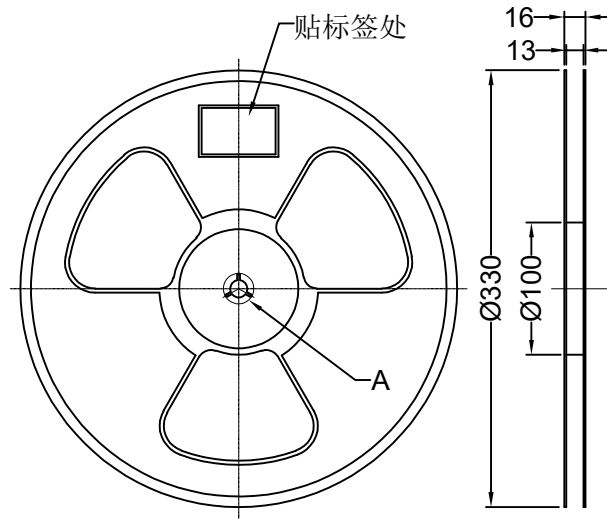


图2 成品载带

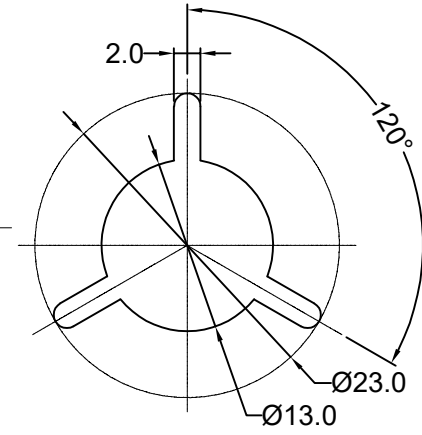
收料方向



SCALE 1/10

上带向轴外 +

图3 盘装料盘



SCALE A=10/1

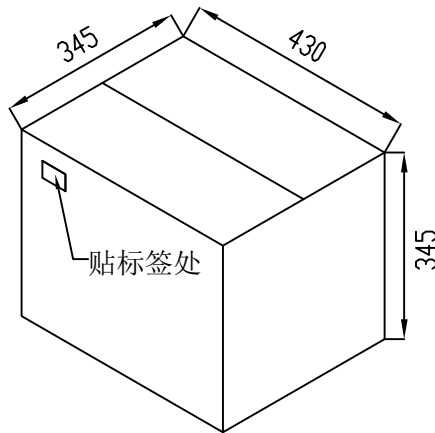


图4 外箱

备注：

图3 盘装料盘 每盘包装数量10000PCS/盘。

图4 每箱（430X345X345）包装数量25盘，共250000PCS

Bestcreate Technology Limited

TOLERANCES UNLESS OTHERWISE SPECIFIED:

X.	±	0.45	X'	±	5'
.X	±	0.35	.X'	±	2'
.XX	±	0.25	.XX'	±	1'

Website: www.bsc-elec.com
Email: bestcreate@bsc-elec.com

DESIGN: I. L DATE: 2017. 3. 1

CHECKED: C. W DATE: 2017. 3. 1

APPROVED: C. W DATE: 2017. 3. 1

TITLE: TOUCH SWITCH (2630SERIES)

MATERILA: PART NO: K-W104070A3-D SIZE: A4

FINSH: DWG NO: K-W104070A3-D 2 OF 2

REV: A UNIT mm SCALE 1=1 QUALITY SYMBOLS