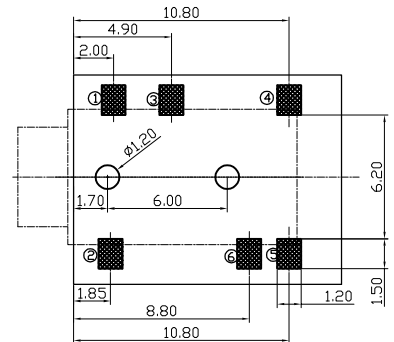
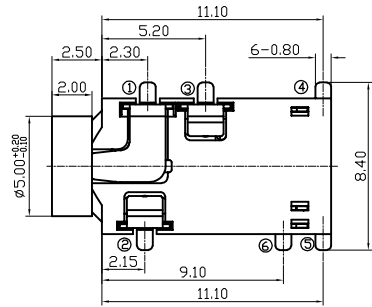
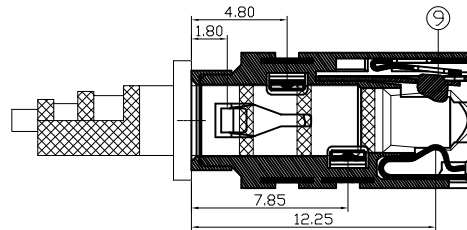
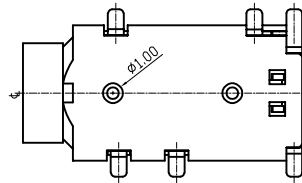
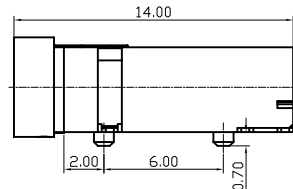
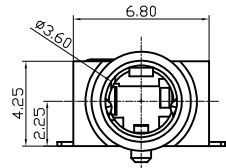


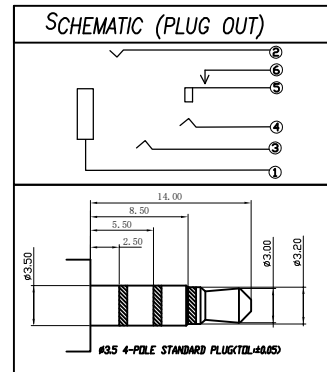
RoHS Compliant



RECOMMENDED PCB LAYOUT

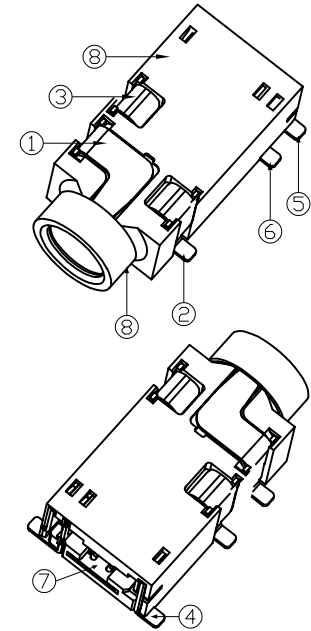


CONTACT POINT SCHEMATIC DIAGRAM



SCHEMATIC (PLUG OUT)

REVISIONS			
REV.	DESCRIPTION	DATE	DESIGN



NOTES:

1. ELECTRICAL CHARACTERISTICS:

- 1.1 RATED VOLTAGE: 5 VDC
- 1.2 RATED CURRENT: 0.5A MAX PER CONTACT AT 30° T-RISE
- 1.3 CONTACT RESISTANCE: 70 MILLIOHMS MAX.
- 1.4 INSULATION RESISTANCE: 100 MEGAOHMS MIN
- 1.5 DIELECTIC WITHSTANDING VOLTAGE: 500V AC AT SEA LEVEL

2. MECHANICAL CHARACTERISTICS:

- 2.1 INSERTION FORCE: 20N MAX. (INITIAL)
20N MAX. (AFTER 5000 CYCLES DURABILITY TEST)
- 2.2 WITHDRWAL FORCE: 12±5N (INITIAL)
9±5N(AFTER 5000 CYCLES DURABILITY TEST)
- 2.3 DURABILITY:5000 CYCLES

3. ENVIRONMENTAL CHARACTERISTICS:

- 3.1 OPERATING TEMPERATURE: -30° TO +85°
- 3.2 STORAGE TEMPERATURE: -40° TO +85°

4. PACKAGE: TAPE REL

NO.	DESCRIPTION	QTY	MATERIAL	PLATING
9	INSERT MOLDING	1	PA9T	BLACK
8	HOUSING	1	PA9T	BLACK
7	7# CONTACT FOOT	1	STAINLESS STEEL PLATE	
6	6# CONTACT FOOT	1	COPPER ALLOY	Au-Plating
5	5# CONTACT FOOT	1	COPPER ALLOY	Au-Plating
4	4# CONTACT FOOT	1	COPPER ALLOY	Au-Plating
3	3# CONTACT FOOT	1	COPPER ALLOY	Au-Plating
2	2# CONTACT FOOT	1	COPPER ALLOY	Au-Plating
1	1# CONTACT FOOT	1	COPPER ALLOY	Au-Plating

Bestcreate Technology Limited

TOLERANCES UNLESS OTHERWISE SPECIFIED:

.X	± 0.30	X.*	± 5°
.XX	± 0.20	.X.*	± 3°
.XXX	± 0.10	.XX.*	± 1°

Website: www.bsc-elec.com

Email: bestcreate@bsc-elec.com

DESIGN: I.L DATE: 2017.3.1

CHECKED: C.W DATE: 2017.3.1

APPROVED: C.W DATE: 2017.3.1

TITLE: 3.5MM PHONE JACK CONNECTOR 6P SMT

MATERIAL:	PART NO: PJ350-06-A005	SIZE: A4
FINISH:	DWG NO: PJ350-06-A005	

REV: A	UNIT mm	SCALE 1=1	QUALITY SYMBOLS
--------	---------	-----------	-----------------