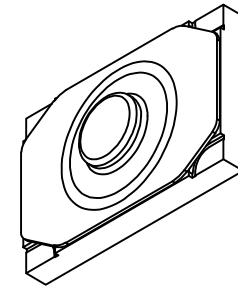
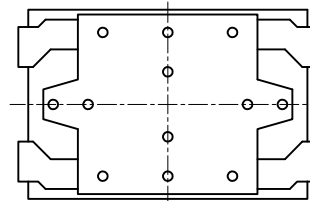
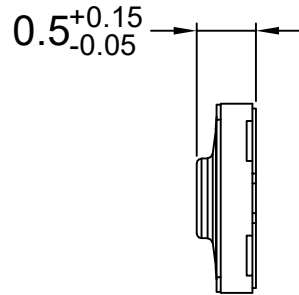
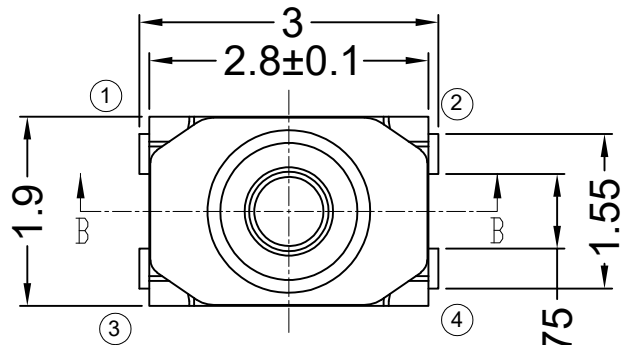
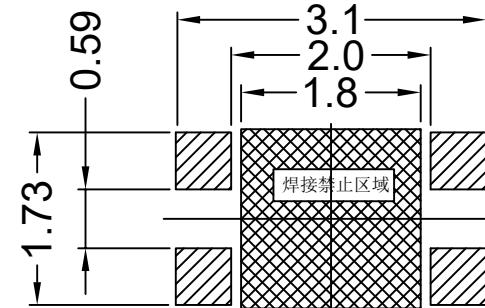


RoHS Compliant

REVISIONS			
REV.	DESCRIPTION	DATE	DESIGN

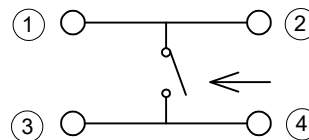


PCB layout



- : 推荐焊盘区域
- : 焊接禁止区域
- : 部分请不要设置焊盘或导线

Circuit Diagram



主要技术指标:
Main Specifications:

气候等级 Climate grade	额定值 Rated values	接触电阻 Contact resistance	耐压 Dielectric strength	绝缘电阻 Insulation resistance	行程 Travel	寿命 Life
-30°C~+85°C	Max50 mA12V Min10 μA1V DC	≤100mΩ	100V. AC. 1Min	≥100MΩ	0.13±0.1mm	100000次

序号	名称	数量	材料	备注
5	胶点	1	聚酰亚胺	黑色
4	端子	1	C5191	镀银
3	白膜	1	聚酰亚胺	白膜(透明)
2	弹片	2	SUS301-Ag0.5	单面镀银
1	塑胶底座	1	PA6T RG430	黑色

Bestcreate Technology Limited

TOLERANCES UNLESS OTHERWISE SPECIFIED:

X.	± 0.45	X'	± 5'
.X	± 0.35	.X'	± 2'
.XX	± 0.25	.XX'	± 1'

DESIGN: DATE:

I. L. 2017. 3. 1

CHECKED: DATE:

C. W. 2017. 3. 1

APPROVED: DATE:

C. W. 2017. 3. 1

TITLE:
TOUCH SWITCH(2819SERIES)

MATERILA: PART NO: K-W104050A1-D SIZE: A4

FINSH: DWG NO: K-W104050A1-D 1 OF 2

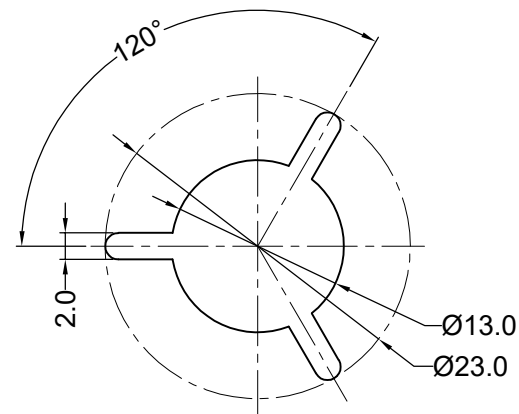
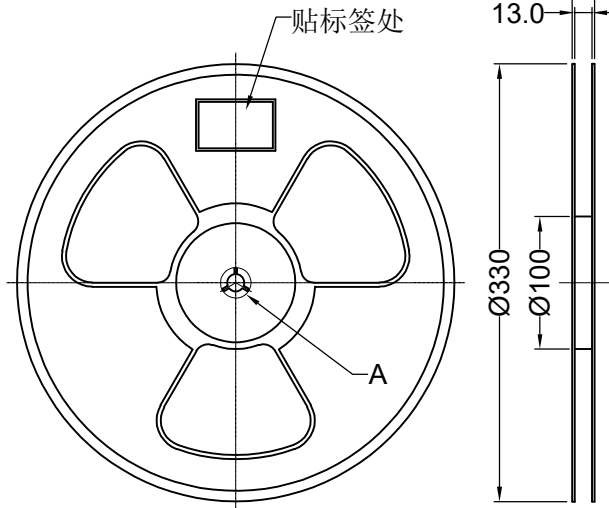
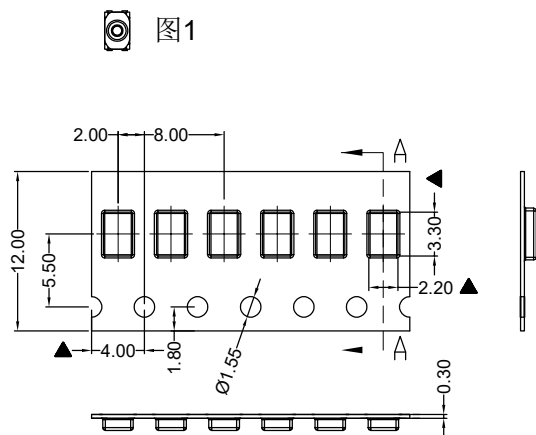
REV: A UNIT mm SCALE 1=1 QUALITY SYMBOLS

Website:www.bsc-elec.com
Email:bestcreate@bsc-elec.com

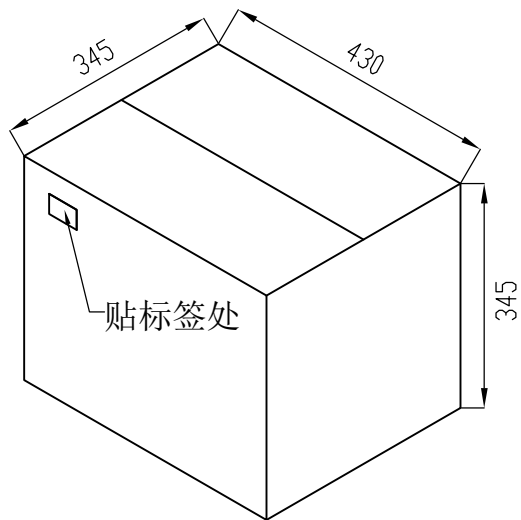
RoHS Compliant

包装流程: 图1 图2 图3 图4

REVISIONS			
REV.	DESCRIPTION	DATE	DESIGN



SCALE A=10/1



上带向轴外 +
图3 盘装料盘

备注:

图3 盘装料盘 每盘包装数量10000PCS/盘。

图4 每箱 (430X345X345) 包装数量25盘, 共250000PCS

Bestcreate Technology Limited

TOLERANCES UNLESS OTHERWISE SPECIFIED:

X.	±	0.45	X'.	±	5'
.X	±	0.35	.X'	±	2'
.XX	±	0.25	.XX'	±	1'

Website: www.bsc-elec.com
Email: bestcreate@bsc-elec.com

DESIGN: I. L. DATE: 2017. 3. 1

CHECKED: C. W. DATE: 2017. 3. 1

APPROVED: C. W. DATE: 2017. 3. 1

TITLE: TOUCH SWITCH (2819SERIES)

MATERILA:	PART NO: K-W104050A1-D	SIZE: A4
FINSH:	DWG NO: K-W104050A1-D	2 OF 2

REV: A	UNIT: mm	SCALE: 1=1	QUALITY SYMBOLS
--------	----------	------------	-----------------