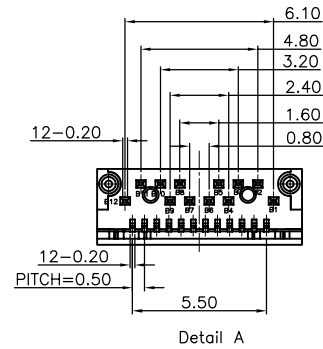
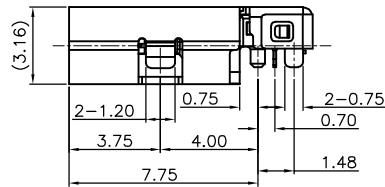
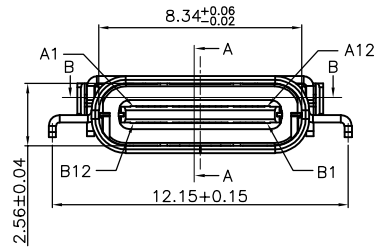
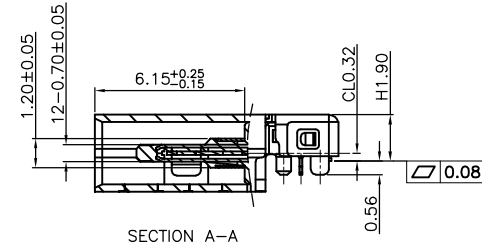
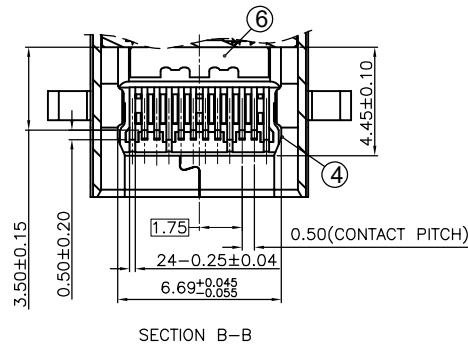
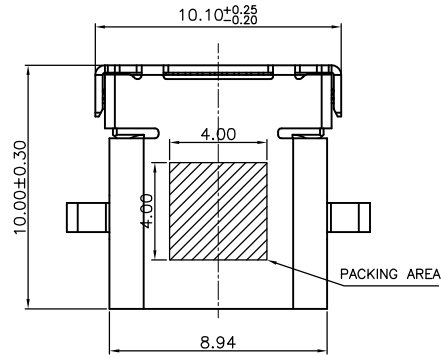


RoHS Compliant

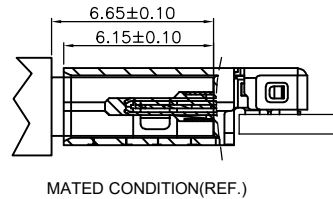
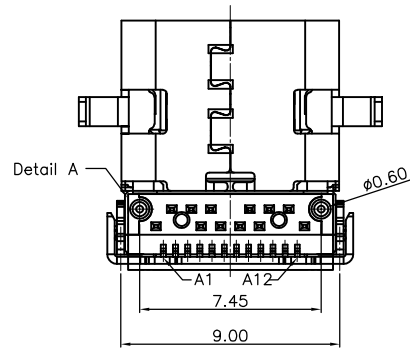
REVISIONS			
REV.	DESCRIPTION	DATE	DESIGN



PART NO. INFORMATION

U06-C F X X 5 R - 075-V2

- PORT TYPE
- C: TYPE C
- PACKAGE
- R: TAPE REEL
- HOUSING COLOR
- 2: WHITE
- 5: BLACK
- 9: NATURE
- HOUSING MATERIAL
- A: LCP B: PBT
- C: PA9T D: PA6T
- E: PA46 F: PA66
- CONTACT PLATED
- 1: GOLD FLASH
- 2: GOLD 3U"
- 3: GOLD 5U"
- 4: GOLD 10U"
- 5: GOLD 15U"
- 6: GOLD 30U"
- GENDER
- F: FEMALE
- M: MALE



NO	PART	Q'TY	Material
1	SHELL	1	STAINLESS STEEL 304 T=0.30mm, NI 30u" MIN PLATED
2	EMC Plate	1	STAINLESS STEEL 301 T=0.10mm, CLEAR ONLY
3	SHIELDING PLATE	1	STAINLESS STEEL 301 T=0.15mm, CLEAR ONLY
4	CONTACT	24	COPPER STEEL C18150-HAu3U" NI 50u" MIN. UNDER PLATED OVER ALL Au PLATED ON THE FUNCTIONAL AREA OF CONTACT. PLATING Tn OF THE SOLDER AREA.
5	HOUSING	1	LCP BLACK UL94 V-0

Bestcreate Technology Limited

TOLERANCES UNLESS OTHERWISE SPECIFIED:

X.	± 0.30	X.'	± 5'
.X	± 0.25	.X'	± 2'
.XX	± 0.10	.XX'	± 1'

DESIGN: I. L DATE:

CHECKED: C. W DATE:

APPROVED: C. W DATE:

TITLE: USB 3.1 C FEMALE CONNECTOR SINGLE SHELL SINK
CLO.32 L=10.0

MATERILA: PART NO: U06-CFXX5R-075-V2 SIZE: A4

FINSH: DWG NO: U06-CFXX5R-075-V2 1 OF 3

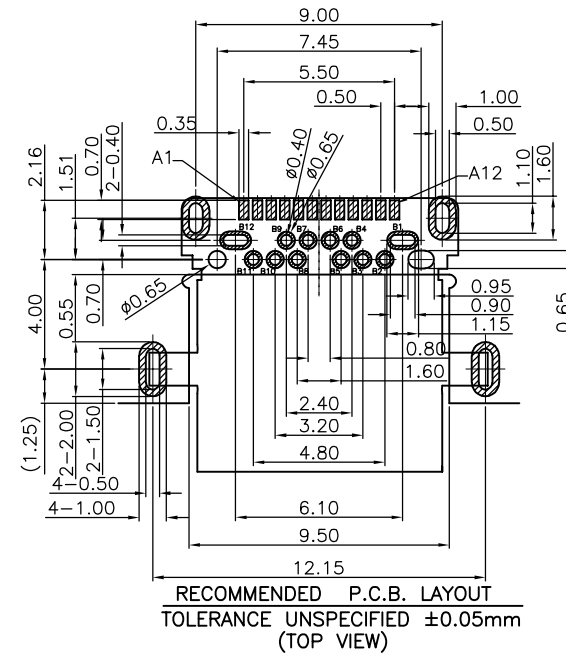
REV: A UNIT mm SCALE 1=1 QUALITY SYMBOLS

Website: www.bsc-elec.com
Email: bestcreate@bsc-elec.com

RoHS Compliant

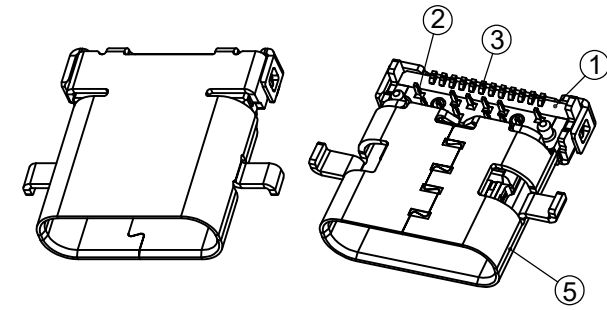
REVISIONS			
REV.	DESCRIPTION	DATE	DESIGN

NOTE:
 1.ELECTRICAL PERFORMANCE,
 1-1. CURRENT RATING:5 AMPS. FOR TOTAL VBUS/GND PINS;
 1.25AMPS FOR CC PIN,0.25 AMPS. FOR ALL OTHER CONTACT.
 1-2. VOLTAGE RATING:20V DC/AC (RMS. MAX)
 1-3. LLCR:.
 VBUS & GND PINS AND OTHER PINS: 40MΩ/PIN MAX.
 SHIELD:50MΩ/MAX.
 LLCR MAX. CHANGE OF ALL PINS: 10MΩ.
 1-4.INSULATION RESISTANCE: 100MΩ MIN
 1-5.DIELECTRIC WITHSTAND VOLTAGE,AC 100V FOR 1 MINUTE.
 2.MECHANICAL PERFORMANCE,
 2-1.INSERTION FORCE: 5~20N.
 2-2.EXTRACTION FORCE: 8~20N.
 2-3.DURABILITY: 10000 CYCLES.
 3.ENVIRONMENTAL PERFORMANCE:
 OPERATING TEMPERATURE: -25°C~+85°C.
 4.IR REFLOW:
 THE PEAK TEMPERATURE ON THE BOARD SHALL
 BE MAINTAINED FOR 10 SECONDS AT 260°C.
 5.COMPLIANCE WITH ROHS REQUIREMENTS.
 6.SALT SPRAY:24H



PIN DEFINITION:

PIN No.	A1	A2	A3	A4	A5	A6	A7	A8	A9	A10	A11	A12
	GND	TX1+	TX1-	VBUS	CC1	D+	D-	SBU1	VBUS	RX2-	RX2+	GND
PIN No.	B12	B11	B10	B9	B8	B7	B6	B5	B4	B3	B2	B1
	GND	RX1+	RX1-	VBUS	SBU2	D-	D+	CC2	VBUS	TX2-	TX2+	GND



Bestcreate Technology Limited

TOLERANCES UNLESS OTHERWISE SPECIFIED:

X.	± 0.30	X.'	± 5'
.X	± 0.25	.X'	± 2'
.XX	± 0.10	.XX'	± 1'

DESIGN: I. L DATE:

CHECKED: C. W DATE:

APPROVED: C. W DATE:

TITLE: USB 3.1 C FEMALE CONNECTOR SINGLE SHELL SINK
 CL0.32 L=10.0

MATERIAL: PART NO: U06-CFXX5R-075-V2 SIZE: A4

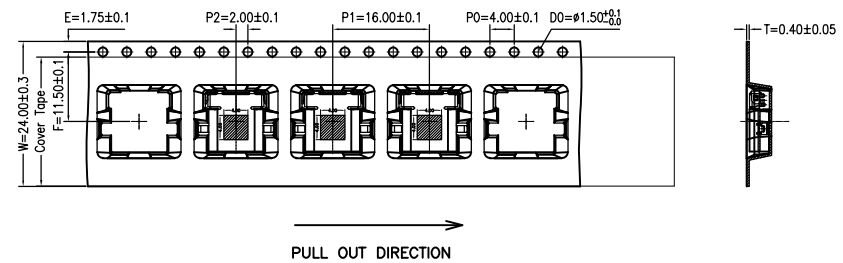
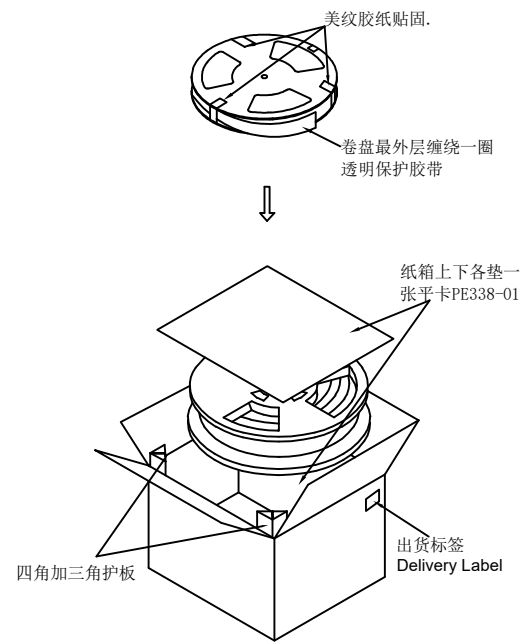
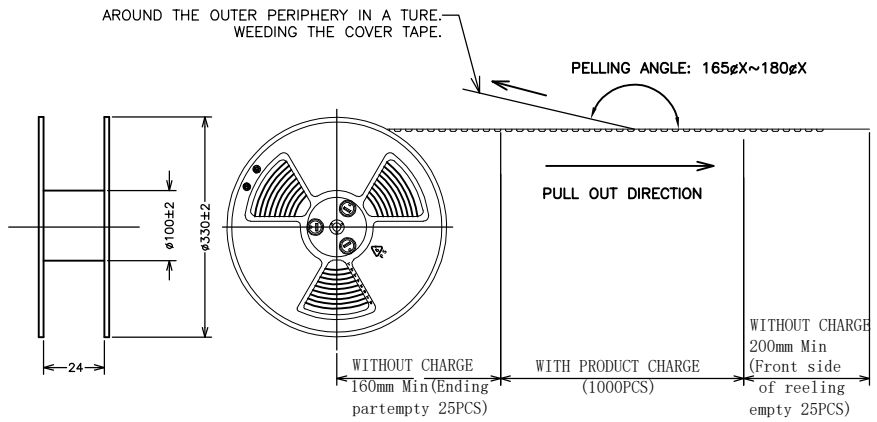
FINISH: DWG NO: U06-CFXX5R-075-V2 2 OF 3

REV: A UNIT mm SCALE 1=1 QUALITY SYMBOLS

Website:www.bsc-elec.com
 Email:bestcreate@bsc-elec.com

RoHS Compliant

REVISIONS			
REV.	DESCRIPTION	DATE	DESIGN



- 包装规范说明:**
1. 如图所示首先CARRIER TAPE (载带) 需先预留25PCS空格后方可置入成品,并附COVER TPAE(上带)覆盖于上,再配合带装机自动卷绕于REEL(塑胶卷轴)收料.
 2. 在定量包装完成后,前端CARRIER TAPE亦需预留25PCS空格,而COVER TPAE配合CARRIER TYPE长度覆盖后,并须再超出200mm以上,最后以胶纸贴固,并于REEL盘上方贴合格标签1张.
 3. 注意:COVER TAPE不可浮起或有贴附不顺,歪斜及成品放置方向错误之现象.再按图示贴3处美纹胶,外围缠绕一圈保护带.
 4. 在纸箱内左右,前后侧各放入一块三角卡板,在每个纸箱内装入10PCS卷盘,纸箱内上下各垫一张平卡, 盖上箱盖后以胶带封箱,于侧位置贴出货标签一张.
 5. 零箱部分, 出货时须用缓冲物填满.

NO.	物料名称 Items	包材料号 Item no	用量 Usage	适用类别 Series	备注 / Remark
①	纸箱 Carton	PE338	1	(空白纸箱 Blank carton)	外尺寸: 350*350*310mm,K=K
②	PE Bag	P120198-01	2		600*600*0.05mm
③	载带 Carrier tape	PE302	/		W=24mm, 16.80m/R透明PET
④	自粘上带 cover Tape	P120122-01	/	自粘上带	W=21.3MM, 200m/r透明色
⑤	塑胶卷轴 Plastic Reel	P120021-01	10		Ø330mm, W=30mm
⑥	三角卡板 Delicant	P120012-01	4		
⑦	三角卡板/ 平卡	PE338-01	4/2		365*300*5mm/340*340*5mm
⑧	合格标签 Qualified Label		10		
⑨	出货标签 Delivery Label		1		
⑩	保护带 Protect tape	PE284	/		W24*400M/R

Bestcreate Technology Limited

TOLERANCES UNLESS OTHERWISE SPECIFIED:	
X. ± 0.30	X.' ± 5'
.X ± 0.25	.X' ± 2'
.XX ± 0.10	.XX' ± 1'
Website:www.bsc-elec.com	
Email:bestcreate@bsc-elec.com	

DESIGN: I. L	DATE:	TITLE: USB 3.1 C FEMALE CONNECTOR SINGLE SHELL SINK CLO. 32 L=10. 0
CHECKED: C. W	DATE:	MATERILA:
APPROVED: C. W	DATE:	PART NO: U06-CFXX5R-075-V2
		FINSH:
		DWG NO: U06-CFXX5R-075-V2
		SIZE: A4
		3 OF 3

REV: A	UNIT mm	SCALE 1=1	QUALITY SYMBOLS
-----------	------------	--------------	--------------------