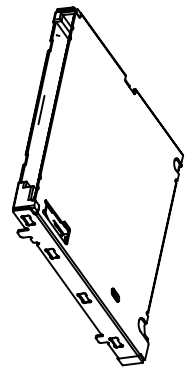
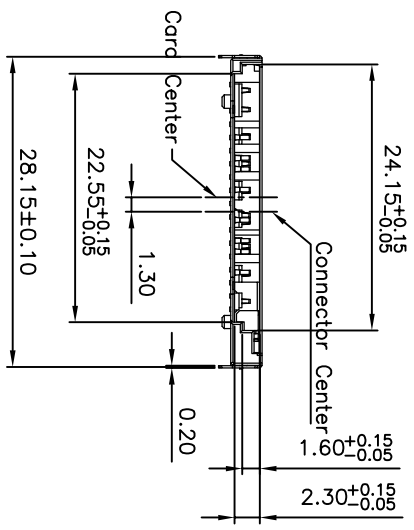
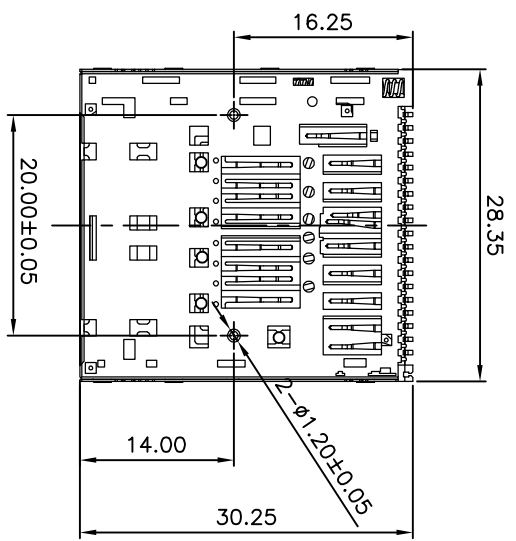
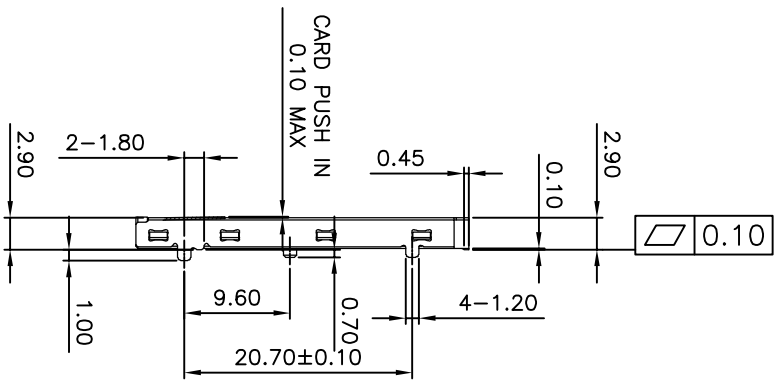
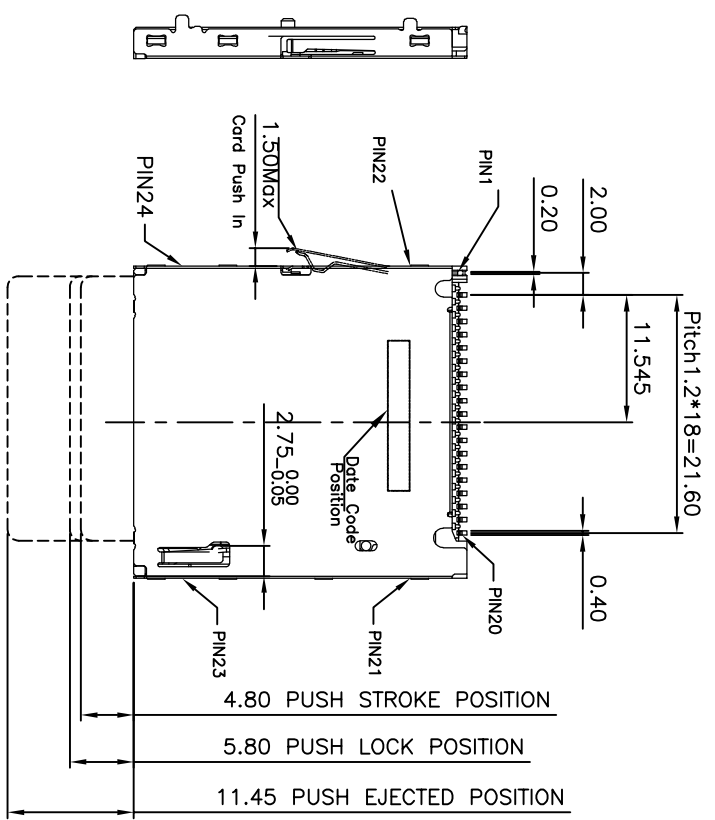


RoHS Compliant

1 2 3 4 5 6 7 8

| REVISIONS |             |      |
|-----------|-------------|------|
| REV.      | DESCRIPTION | DATE |
|           |             |      |



# Bestcreate Technology Limited

TOLERANCES UNLESS OTHERWISE SPECIFIED:

|      |        |      |      |
|------|--------|------|------|
| X    | ± 0.35 | X'   | ± 5' |
| .XX  | ± 0.25 | .X'  | ± 2' |
| .XXX | ± 0.15 | .XX' | ± 1' |

DESIGN: I.L  
CHECKED: C.W  
DATE: 2017.3.1

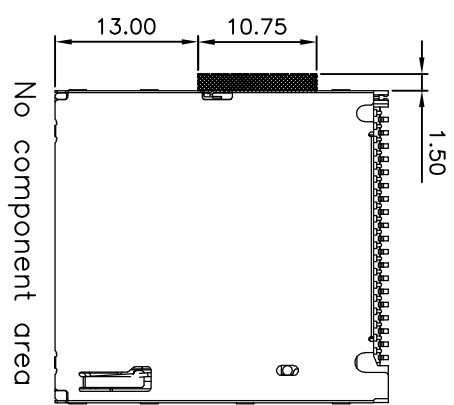
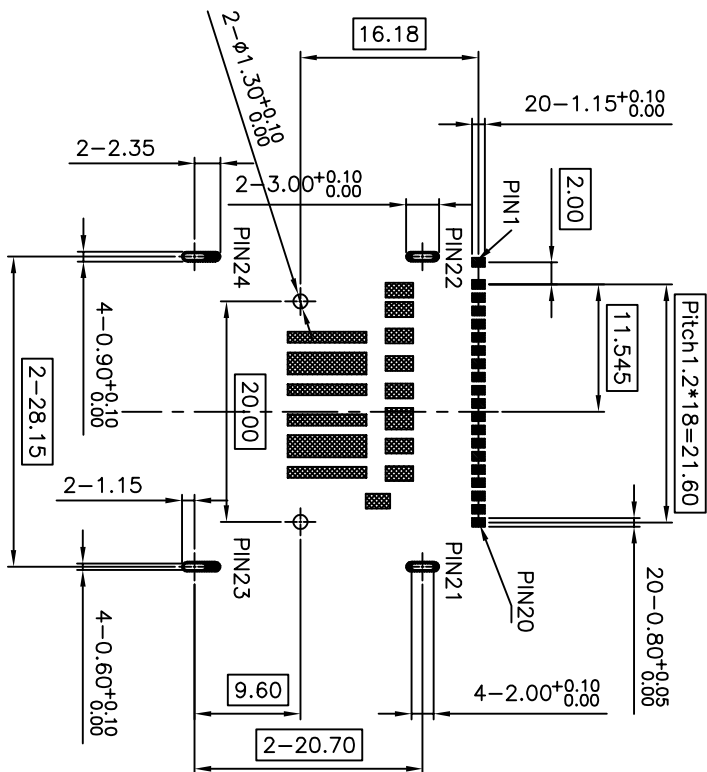
TITLE: SD 4.0 P/P 板上中型

SIZE: A4

|        |         |           |                 |   |               |                |            |                        |                       |               |
|--------|---------|-----------|-----------------|---|---------------|----------------|------------|------------------------|-----------------------|---------------|
| REV: A | UNIT mm | SCALE 1=1 | QUALITY SYMBOLS | Website: www.bsc-elec.com<br>Email: bestcreate@bsc-elec.com | APPROVED: C.W | DATE: 2017.3.1 | FINSH: C.W | PART NO: SD-20XX5R-006 | DWG NO: SD-20XX5R-006 | SHEET: 1 OF 4 |
|--------|---------|-----------|-----------------|---|---------------|----------------|------------|------------------------|-----------------------|---------------|

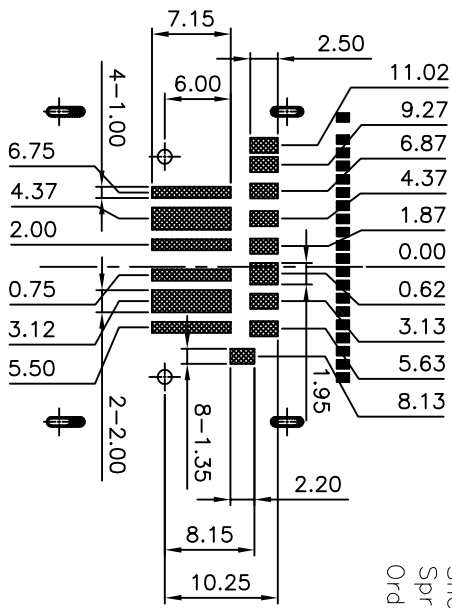
1 2 3 4 5 6 7 8

RoHS Compliant



**PAD**  
 No trace, no test point,  
 no via hole, no ground area

RECOMMEND P.C.B LAYOUT  
 TOLERANCE ±0.05



**PART NO. INFORMATION**

**SD -20 X X 5 R - 006**

- CONTACT PLATED
- 1: GOLD FLASH
- 2: GOLD 3U"
- 3: GOLD 5U"
- 4: GOLD 10U"
- 5: GOLD 15U"
- 6: GOLD 30U"
- PACKAGE
- R: TAPE REEL
- HOUSING COLOR
- 2: WHITE
- 3: BLACK
- 5: NATURE
- HOUSING MATERIAL
- A: LCP
- B: PBT
- C: PA9T D: PA6T
- E: PA46 F: PA66

**Specification**  
 \*Electrical Characteristics:  
 Contact Current Rating:0.5 Amperes.  
 Dielectric Withstanding Voltage:AC500V r.m.s.  
 Insulation Resistance:1000 MΩ Minimum.  
 Contact Resistance:100 mΩ Maximum.  
 \*Environmental:  
 Operating Temperature: -25°C~+85°C.  
 \*Mechanical Characteristics:  
 Mating Cycles:10,000 Cycles Insertion/Extraction  
 Card Push Insertion/Out Force:1kgf Maximum.  
 Contact Retention Force:0.15kgf Minimum.  
 \*Material:  
 Insulator:HI-Temp Plastic UL 94V-0 Rated.  
 Contact:Copper Alloy.  
 Shell:Stainless Steel.  
 Spring:SWPB. **WP** Pin Terminal plating SI  
 Ordering Information:

|              |                    |
|--------------|--------------------|
| WITHOUT CARD | CARD INSERTED:LOCK |
| C/D #12      | C/D #12            |
| VSS1 #11     | VSS1 #11           |
| VSS1 #12     | VSS1 #11           |

**Bestcreate Technology Limited**

|        |         |           |                 |
|--------|---------|-----------|-----------------|
| REV: A | UNIT mm | SCALE 1=1 | QUALITY SYMBOLS |
|--------|---------|-----------|-----------------|

|  |        |                |      |
|--|--------|----------------|------|
| TOLERANCES UNLESS OTHERWISE SPECIFIED: |        |                |      |
| X                                      | ± 0.35 | X'             | ± 5' |
| .XX                                    | ± 0.25 | .X'            | ± 2' |
| .XXX                                   | ± 0.15 | .XX'           | ± 1' |
| Website:www.bsc-elec.com               |        | APPROVED: C.W  |      |
| Email:bestcreate@bsc-elec.com          |        | DATE: 2017.3.1 |      |

|               |                |
|---------------|----------------|
| DESIGN: 1.L   | DATE: 2017.3.1 |
| CHECKED: C.W  | DATE:          |
| APPROVED: C.W | DATE:          |

|                        |                        |               |
|------------------------|------------------------|---------------|
| TITLE: SD 4.0 P/P 板上中型 | PART NO: SD-20XXSR-006 | SIZE: A4      |
| MATERIAL: C.W          | DWG NO: SD-20XXSR-006  | SHEET: 2 OF 4 |

| REVISIONS |             |      |
|-----------|-------------|------|
| REV.      | DESCRIPTION | DATE |
|           |             |      |

1 RoHS Compliant


2 3 4 5 6 7 8

| REVISIONS |             |      |
|-----------|-------------|------|
| REV.      | DESCRIPTION | DATE |
|           |             |      |

### Pin Define

| Connector PinNo. | Specifications SD4.0 PinNo. | Specifications MMC PinNo. | SD Mode  |        |                                  | UHS-II Mode |      |                       | MMC  |                                |
|------------------|-----------------------------|---------------------------|----------|--------|----------------------------------|-------------|------|-----------------------|------|--------------------------------|
|                  |                             |                           | Name     | Type   | Description                      | Name        | Type | Description           | Name | Type                           |
| P1               | P8                          |                           | WP       |        |                                  | WP          |      |                       |      |                                |
| P2               | P7                          |                           | DATA1    | I/O/PP | Data Line[Bit 1]                 | RCLK-       | I    |                       |      |                                |
| P3               | P7                          |                           | DATA0    | I/O/PP | Data Line[Bit 0]                 | RCLK+       | I    |                       |      | DATA I/O/PP Data               |
| P4               | P17                         |                           | ---      |        | Not Used(Connected to ground)    | VSS5        | S    | Supply voltage ground |      |                                |
| P5               | P6                          |                           | VSS2     | S      | Supply voltage ground            | VSS2        | S    | Supply voltage ground |      | VSS Supply voltage ground      |
| P6               | P16                         |                           | ---      |        | Not Used                         | D1+         |      |                       |      |                                |
| P7               | P5                          |                           | CLK      | I      | Clock                            | ---         |      |                       |      | CLK I Clock                    |
| P8               | P15                         |                           | ---      |        | Not Used                         | D1-         |      |                       |      |                                |
| P9               | P4                          |                           | VDD      | S      | Supply voltage                   | VDD1        | S    | Supply voltage(3.3V)  |      | VDD S Supply voltage           |
| P10              | P14                         |                           | ---      |        | Not Used                         | VDD2        | S    | Supply voltage(1.8V)  |      |                                |
| P11              | P3                          |                           | VSS1     | S      | Supply voltage ground            | VSS1        | S    | Supply voltage ground |      | VSS S Supply voltage ground    |
| P12              |                             |                           | CD       |        |                                  | CD          |      |                       |      |                                |
| P13              | P13                         |                           | ---      |        | Not Used(Connected to ground)    | VSS4        | S    | Supply voltage ground |      |                                |
| P14              | P2                          |                           | CMD      | PP     | Command/Response                 | ---         |      | Not Used              |      | CMD I/O/PP/OD Command/Reserved |
| P15              | P12                         |                           | ---      |        | Not Used                         | D0-         |      |                       |      |                                |
| P16              | P1                          |                           | CD/DATA3 | I/O/PP | Card Detect/<br>Data Line[Bit 3] | ---         |      | Not Used              |      | RSV NC Reserved for future use |
| P17              | P11                         |                           | ---      |        | Not Used                         | D0+         |      |                       |      |                                |
| P18              | P9                          |                           | DATA2    | I/O/PP | Data Line[Bit 2]                 | ---         |      |                       |      |                                |
| P19              | P10                         |                           | ---      |        | Not Used(Connected to ground)    | VSS3        | S    | Supply voltage ground |      |                                |
| P20              |                             |                           | GND      |        |                                  | GND         |      |                       |      |                                |
| P21              |                             |                           | GND      |        |                                  | GND         |      |                       |      |                                |
| P22              |                             |                           | GND      |        |                                  | GND         |      |                       |      |                                |
| P23              |                             |                           | GND      |        |                                  | GND         |      |                       |      |                                |
| P24              |                             |                           | GND      |        |                                  | GND         |      |                       |      |                                |

# Bestcreate Technology Limited

REV: A UNIT mm SCALE 1=1 QUALITY SYMBOLS 

1 2 3 4 5 6 7 8

DESIGN: DATE: 2017.3.1  
 CHECKED: DATE: 2017.3.1  
 APPROVED: DATE: 2017.3.1

TOLERANCES UNLESS OTHERWISE SPECIFIED:  
 .X ± 0.35 X' ± 5'  
 .XX ± 0.25 X'' ± 2'  
 .XXX ± 0.15 .XX' ± 1'

Website: www.bsc-elec.com  
 Email: bestcreate@bsc-elec.com

TITLE: SD 4.0 P/P 板上中型  
 MATERIA: PART NO: SD-20XX5R-006 SIZE: A4  
 FINSH: DWG NO: SD-20XX5R-006 SHEET: 3 OF 4

