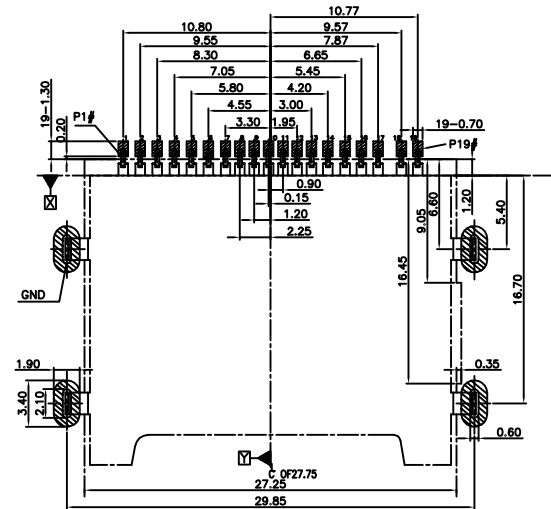
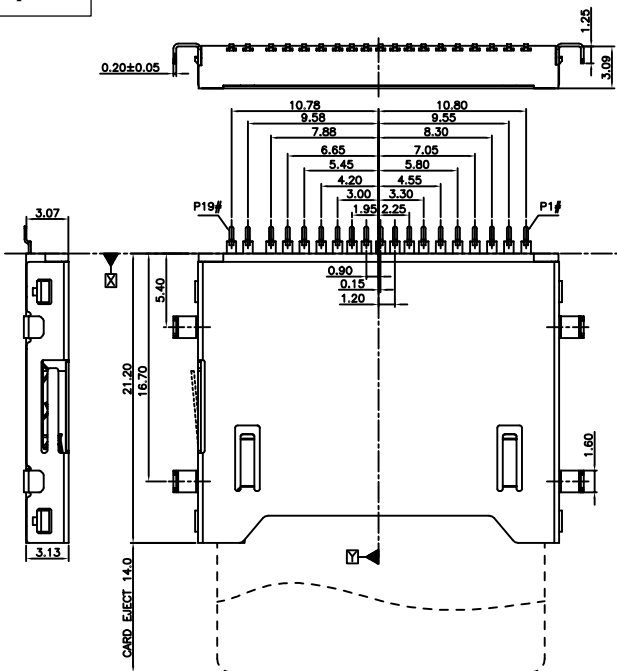


RoHS Compliant

REVISIONS			
REV.	DESCRIPTION	DATE	DESIGN

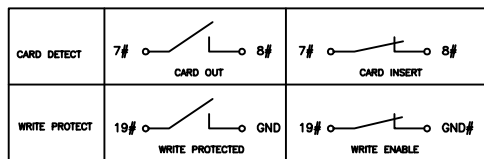
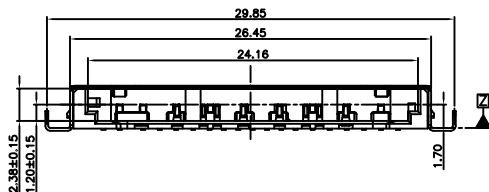
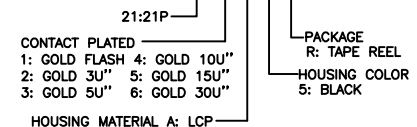


RECOMMENDER PCB LAYOUT

TOLERANCE UNLESS OTHERWISE IS 1.00 ±0.05

- Notes:
- 1. All Dimensions are in Millimeters.
 - 2. Operation voltage: 10 VAC max.
 - 3. Current rating : 1 Amps max.
 - 4. Contact resistance: 100m ohms max.
 - 5. Insulation resistance: 1000M ohms min. 500 VDC
 - 6. Dielectric withstanding voltage: 500 VAC / 1minute
 - 7. Operating Temperature: -20°C to +60°C
 - 8. Storage Temperature: -40°C to +70°C
 - 9. Durability 10000 cycles.

- MATERIAL
1. Housing: LCP E130I(UL 94V-0) Black.
 2. Contacts: PHOSPHOR BRONZE(C5210R-EH)
 3. Shell: Brass
- Plating:
1. Contacts: 50U" MIN NICKEL UNDERPLATED, 100u" MIN Sn PLATED SOLDER TAILS. 1U" MIN GOLD PLATED CONTACT AREA
 2. Shell: 50u" MIN NICKEL PLATED;
- PART NO. INFORMATION **SD - 21 X X 5 R - 003**



PIN DEFINE:

PIN#	NAME	DESCRIPTION	PIN#	NAME	DESCRIPTION
1	VSS3	GROUND	11	VDD1	SUPPLY VOLTAGE
2	DAT2	DATA LINE BIT2	12	D1-	DIFFERENTIAL DATE 1-
3	DO+	DIFFERENTIAL DATE 0+	13	CLK	CLOCK
4	CD/DAT3	CARD DETECT/DATA LINE BIT3	14	D1+	DIFFERENTIAL DATE 1+
5	DO-	DIFFERENTIAL DATE 0-	15	VSS2	SUPPLY VOLTAGE GROUND
6	CMD	COMMAND/RESPONSE	16	VSS5	GROUND
7	CD	CARD DETECT	17	DAT0	DATA LINE BIT0
8	VSS1	SUPPLY VOLTAGE GROUND	18	DAT1	DATA LINE BIT1
9	VSS4	GROUND	19	WP	WRITE PROTECT
10	VDD2	SUPPLY VOLTAGE(1.8V)			

Bestcreate Technology Limited

TOLERANCES UNLESS OTHERWISE SPECIFIED:

X.	± 0.35	X.*	± 5°
.X	± 0.30	.X*	± 2.5°
.XX	± 0.25	.XX*	± 1°

Website: www.bsc-elec.com
Email: bestcreate@bsc-elec.com

DESIGN: DATE: 2017. 3. 1
I. L
CHECKED: DATE:
C. W 2017. 3. 1
APPROVED: DATE:
C. W 2017. 3. 1

TITLE: **SD 4.0 CONNECTOR LONG BODY 1.70MM**

MATERILA:	PART NO: SD-21XX5R-003	SIZE: A4
FINSH:	DWG NO: SD-21XX5R-003	

REV: A	UNIT mm	SCALE 1=1	QUALITY SYMBOLS
--------	---------	-----------	-----------------