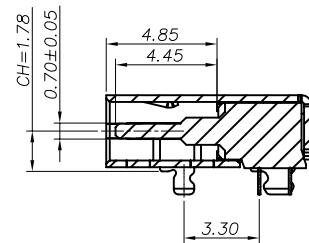
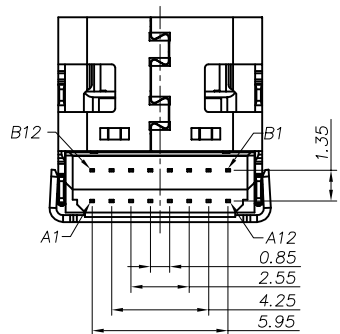
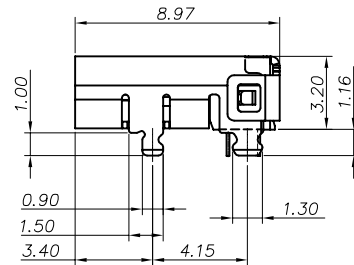
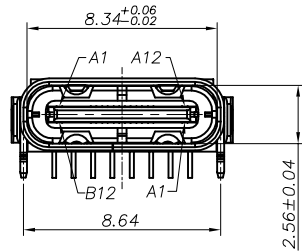
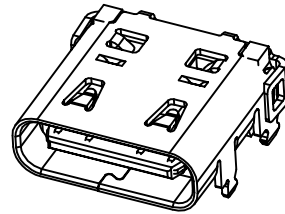
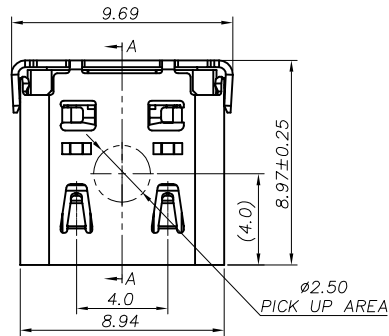


RoHS Compliant

REVISIONS			
REV.	DESCRIPTION	DATE	DESIGN



NOTE:
 1.MATERIAL SPECIFICATION:
 1.HOUSING: PA9T,UL94 V-0.
 2.CONTACTS: COPPER ALLOY(C1814)
 3.MID PLATE: STAINLESS STEEL(SUS301)
 4.FRONT SHELL: STAINLESS STEEL(SUS304)
 2.PLATING SPECIFICATION:
 2-1.TERMINAL:
 Ni 50u" MIN. UNDER PLATED OVER ALL.
 Au PLATED ON THE FUNCTIONAL AREA OF CONTACT.
 (GOLD PLATING THICKNESS FOLLOW THE P/N)
 PLATING SPECIFICATIONS OF THE SOLDER AREA FOLLOW THE P/N
 2-2.FRONT SHELL:
 PLATING SPECIFICATIONS FOLLOW THE P/N
 2-3.MID PLATE&:
 CLEAR ONLY
 3.MECHANICAL PERFORMANCE,
 3-1.INSERTION FORCE: 0.5~2.0kgf.
 3-2.REMOVAL FORCE: 0.8kgf~2.0kgf.
 3-3.DURABILITY: 10000 CYCLES.
 4.ELECTRICAL PERFORMANCE,
 4-1. CURRENT RATING: 5.0A
 VOLTAGE RATING: 5.0V
 4-2. LLCR:
 VBUS & GND PINS AND OTHER PINS: 40mΩ/PIN MAX.
 SHIELD: 50mΩ/MAX.
 LLCR MAX. CHANGE OF ALL PINS: 10mΩ
 4-3.INSULATION RESISTANCE: 100MΩ MIN
 4-4.DIELECTRIC WITHSTAND VOLTAGE,AC 100V FOR 1 MINUTE.
 5. ENVIRONMENTAL PERFORMANCE:
 OPERATING TEMPERATURE: -25°C~+85°C.
 6.IR REFLOW:
 THE PEAK TEMPERATURE ON THE BOARD SHALL
 BE MAINTAINED FOR 10 SECONDS AT 260°C.

PART NO. INFORMATION
U06-C F X X 5 R - 048

PORT TYPE
 C: TYPE C

GENDER
 F: FEMALE
 M: MALE

CONTACT PLATED
 1: GOLD FLASH
 2: GOLD 3U"
 3: GOLD 5U"
 4: GOLD 10U"
 5: GOLD 15U"
 6: GOLD 30U"

PACKAGE
 R: TAPE REEL

HOUSING COLOR
 2: WHITE
 5: BLACK
 9: NATURE

HOUSING MATERIAL
 A: LCP B: PBT
 C: PA9T D: PA6T
 E: PA46 F: PA66

TABLE 1

BLACK	Au: 3u"	Au: G/F	Ni 30u"Min
HOUSING COLOR	FUNCTIONAL AREA	SOLDER AREA	SHELL PLATING
	TERMINAL		

Bestcreate Technology Limited

TOLERANCES UNLESS OTHERWISE SPECIFIED:

X.	± 0.50	X.*	± 5'
.X	± 0.38	.X*	± 2'
.XX	± 0.25	.XX*	± 1'

Website: www.bsc-elec.com
 Email: bestcreate@bsc-elec.com

DESIGN: I. L DATE:

CHECKED: C. W DATE:

APPROVED: C. W DATE:

TITLE: USB C FEMALE 16PIN DOUBLE ROW DIP TYPE

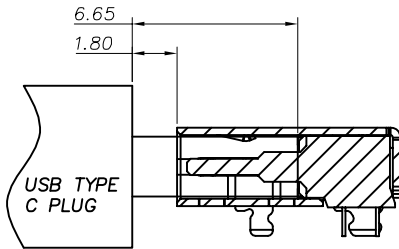
MATERIALA: PART NO: U06-CFXX5R-048 SIZE: A4

FINSH: DWG NO: U06-CFXX5R-048

REV: A UNIT mm SCALE 1=1 QUALITY SYMBOLS

RoHS Compliant

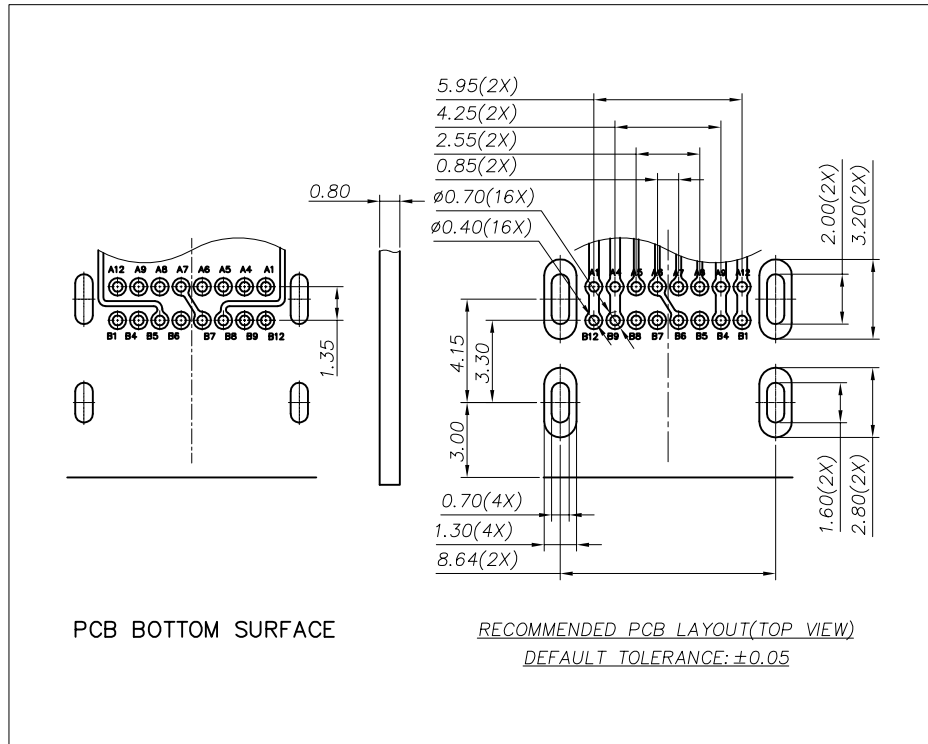
REVISIONS			
REV.	DESCRIPTION	DATE	DESIGN



AFTER MATING

USB TYPE-C PIN ASSIGNMENTS

PIN NUMBER	SIGNAL NAME	PIN NUMBER	SIGNAL NAME
A1	GND	B12	GND
A2	 	B11	
A3	 	B10	
A4	Vbus	B9	Vbus
A5	CC1	B8	SBU2
A6	Dp1	B7	Dn2
A7	Dn1	B6	Dp2
A8	SBU1	B5	CC2
A9	Vbus	B4	Vbus
A10	 	B3	
A11	 	B2	
A12	GND	B1	GND



PCB BOTTOM SURFACE

RECOMMENDED PCB LAYOUT(TOP VIEW)
DEFAULT TOLERANCE: ±0.05

Bestcreate Technology Limited

TOLERANCES UNLESS OTHERWISE SPECIFIED:

X.	± 0.50	X.*	± 5°
.X	± 0.38	.X*	± 2°
.XX	± 0.25	.XX*	± 1°

Website: www.bsc-elec.com
Email: bestcreate@bsc-elec.com

DESIGN: I. L DATE: TITLE:

CHECKED: C. W DATE: **USB C FEMALE 16PIN DOUBLE ROW DIP TYPE**

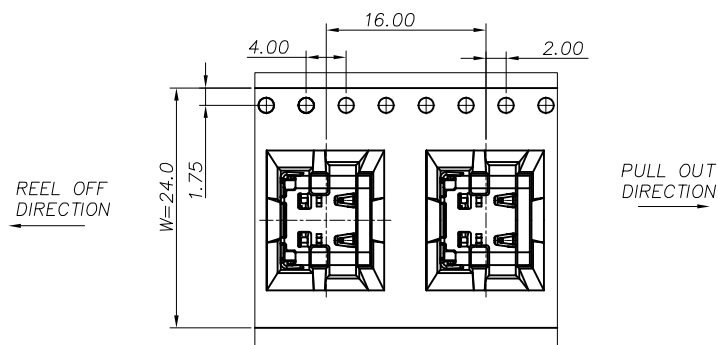
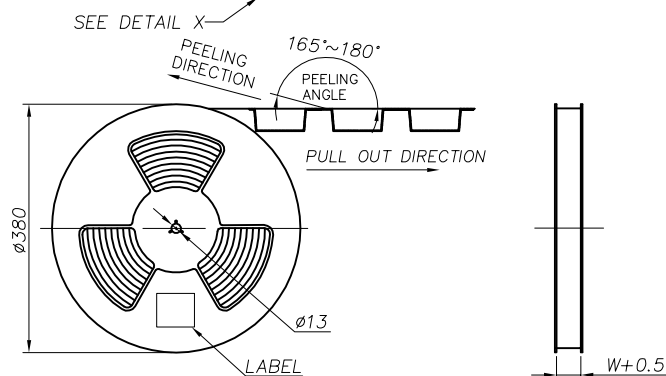
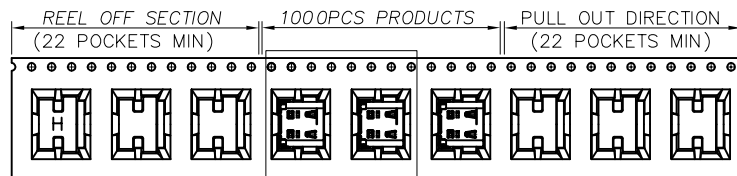
APPROVED: C. W DATE: MATERILA: PART NO: U06-CFXX5R-048 SIZE: A4

REV: A UNIT mm SCALE 1=1 QUALITY SYMBOLS

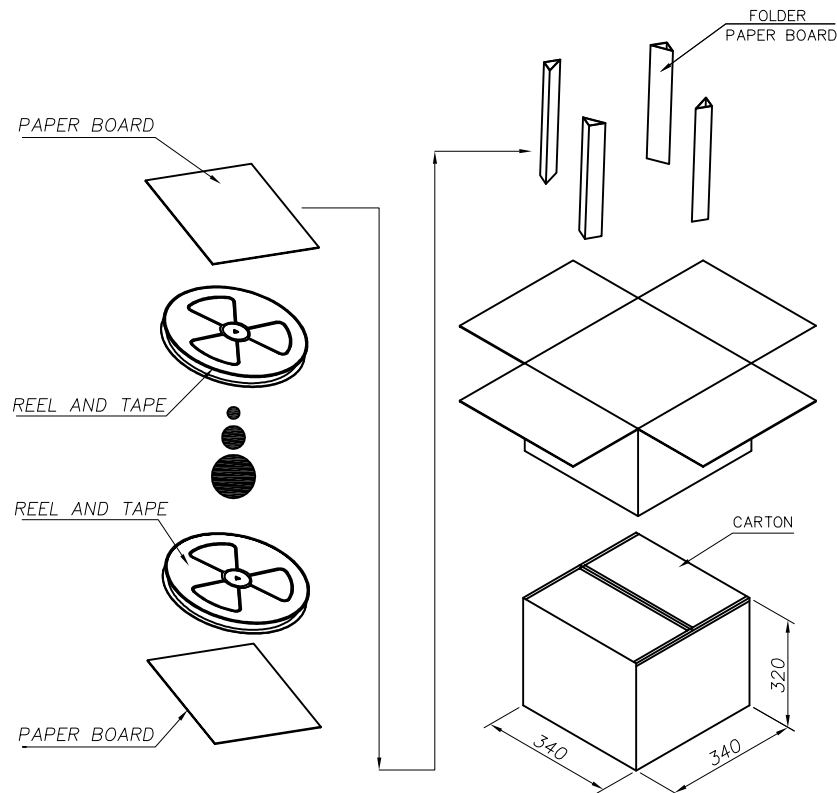
FINSH: DWG NO: U06-CFXX5R-048

RoHS Compliant

REVISIONS			
REV.	DESCRIPTION	DATE	DESIGN



DETAIL X
SCALE 2:1



	REEL/TRAY	CARTON
CONNECTOR (PCS)	1000	10000

Bestcreate Technology Limited

TOLERANCES UNLESS OTHERWISE SPECIFIED:

X.	± 0.50	X.*	± 5°
.X	± 0.38	.X*	± 2°
.XX	± 0.25	.XX*	± 1°

Website: www.bsc-elec.com
Email: bestcreate@bsc-elec.com

DESIGN: I.L

DATE:

CHECKED: C.W

DATE:

APPROVED: C.W

DATE:

TITLE: USB C FEMALE 16PIN DOUBLE ROW DIP TYPE

MATERILA: PART NO: U06-CFXX5R-048 SIZE: A4

FINSH: DWG NO: U06-CFXX5R-048

REV: A UNIT mm SCALE 1=1 QUALITY SYMBOLS

1

2

3

4

5

6

7

8