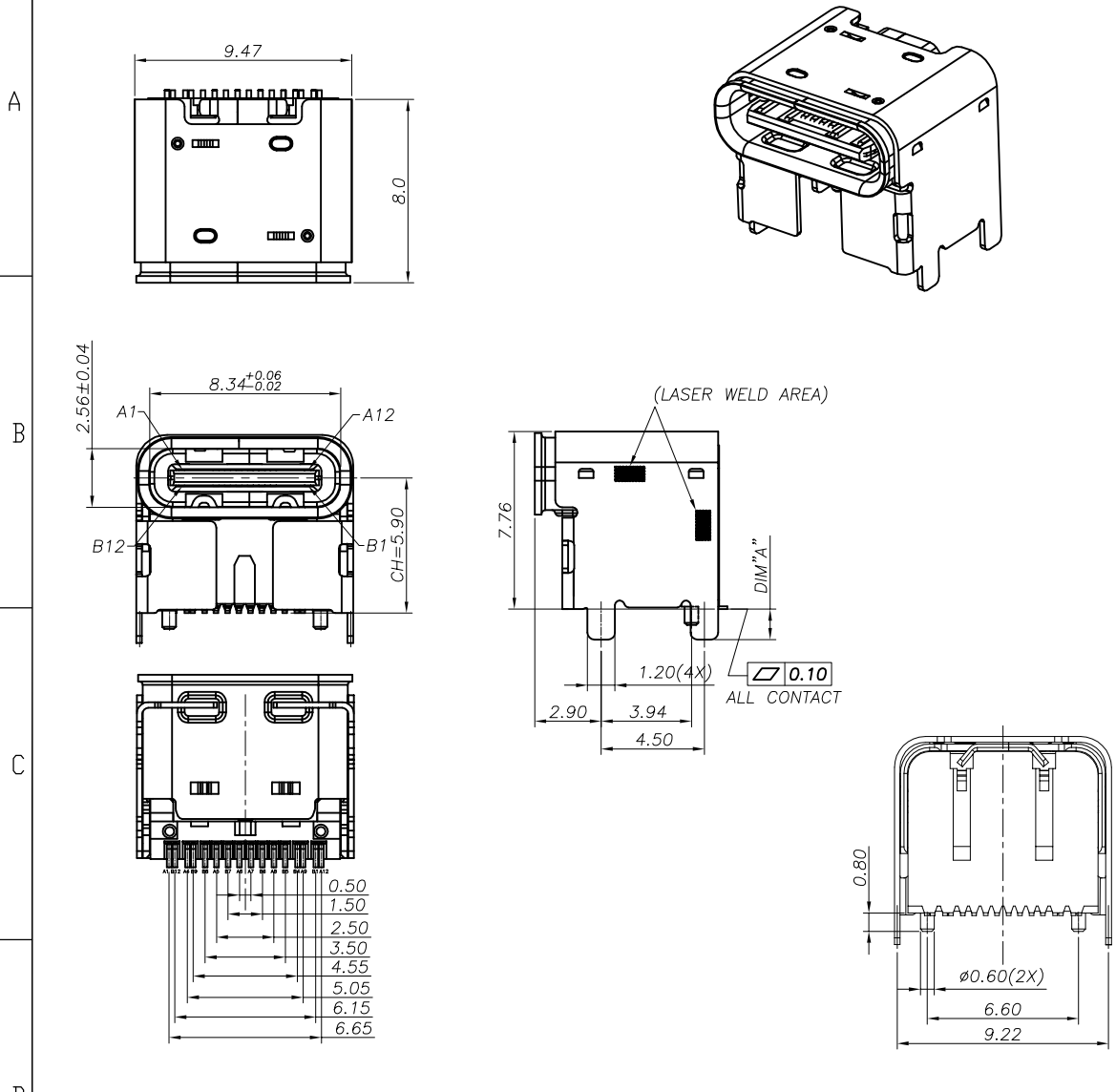


RoHS Compliant

REVISIONS			
REV.	DESCRIPTION	DATE	DESIGN



NOTE:
 1.MATERIAL SPECIFICATION:
 1.HOUSING:HIGH TEMPERATURE RESISTANT PLASTIC,UL94 V-0.
 2.TERMINAL:COPPER ALLOY (C1814)
 3.MID PLATE: STAINLESS STEEL (SUS301)
 4.FRONT SHELL: STAINLESS STEEL (SUS304)
 5.TOP SHELL: STAINLESS STEEL (SUS304)
 2.PLATING SPECIFICATION:
 2-1.CONTACTS:
 Ni 50u" MIN. UNDER PLATED OVER ALL.
 Au PLATED ON THE FUNCTIONAL AREA OF CONTACT.
 (GOLD PLATING THICKNESS FOLLOW THE P/N)
 PLATING SPECIFICATIONS OF THE SOLDER AREA FOLLOW THE P/N
 2-2.FRONT SHELL&TOP SHELL:
 Ni 30u" MIN. UNDER PLATED OVER ALL.
 2-3.MID PLATE:
 CLEAR ONLY
 3.MECHANICAL PERFORMANCE,
 3-1.INSERTION FORCE: 0.5~2.0kgf.
 3-2.REMOVAL FORCE: 0.8kgf~2.0kgf.
 3-3.DURABILITY: 10000 CYCLES.
 4.ELECTRICAL PERFORMANCE,
 4-1. VOLTAGE RATING:5 V DC/AC (RMS. max)
 CURRENT RATING:5 AMPS. FOR TOTAL VBUS/GND PINS;
 1.25AMPS FOR CC PIN,0.25 AMPS. FOR ALL OTHER CONTACT.
 4-2. LLCR:
 VBUS & GND PINS AND OTHER PINS: 40mΩ/PIN MAX.
 SHIELD: 50mΩ/MAX.
 LLCR MAX. CHANGE OF ALL PINS: 10mΩ.
 4-3.INSULATION RESISTANCE: 100MΩ MIN
 4-4.DIELECTRIC WITHSTAND VOLTAGE,AC 100V FOR 1 MINUTE.
 5. ENVIRONMENTAL PERFORMANCE:
 OPERATING TEMPERATURE: -25°C~+85°C.
 6.IR REFLOW:
 THE PEAK TEMPERATURE ON THE BOARD SHALL
 BE MAINTAINED FOR 10 SECONDS AT 260°C.

PART NO. INFORMATION

U06-C F X X 5 R - A012

GENDER F: FEMALE M: MALE	CONTACT PLATED 1: GOLD FLASH 2: GOLD 3U" 3: GOLD 5U" 4: GOLD 10U" 5: GOLD 15U" 6: GOLD 30U"	PORT TYPE C: TYPE C	PACKAGE R: TAPE REEL	DIM A(TAIL LENGTH) O: 1.30MM
			HOUSING MATERIAL A: LCP B: PBT C: PA9T D: PA6T E: PA46 F: PA66	
			HOUSING COLOR 2: WHITE 5: BLACK 9: NATURE	

Bestcreate Technology Limited

TOLERANCES UNLESS OTHERWISE SPECIFIED:			
X.	± 0.30	X.*	± 10°
.X	± 0.20	.X*	± 8°
.XX	± 0.10	.XX*	± 5°
Website: www.bsc-elec.com			
E-mail: bestcreate@bsc-elec.com			

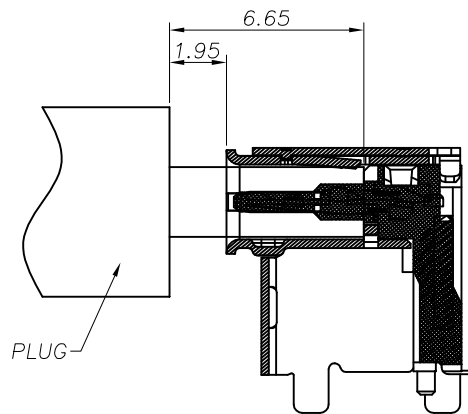
DESIGN: I. L	DATE: 2017. 3. 1
CHECKED: C. W	DATE: 2017. 3. 1
APPROVED: C. W	DATE: 2017. 3. 1

TITLE: USB C F 16PIN SMT CH=5.9		
MATERILA:	PART NO: U06-CFXX5R-A012	SIZE: A4
FINSH:	DWG NO: U06-CFXX5R-A012	SHEET: 1 OF 3

REV: A	UNIT mm	SCALE 1=1	QUALITY SYMBOLS
-----------	------------	--------------	-----------------

RoHS Compliant

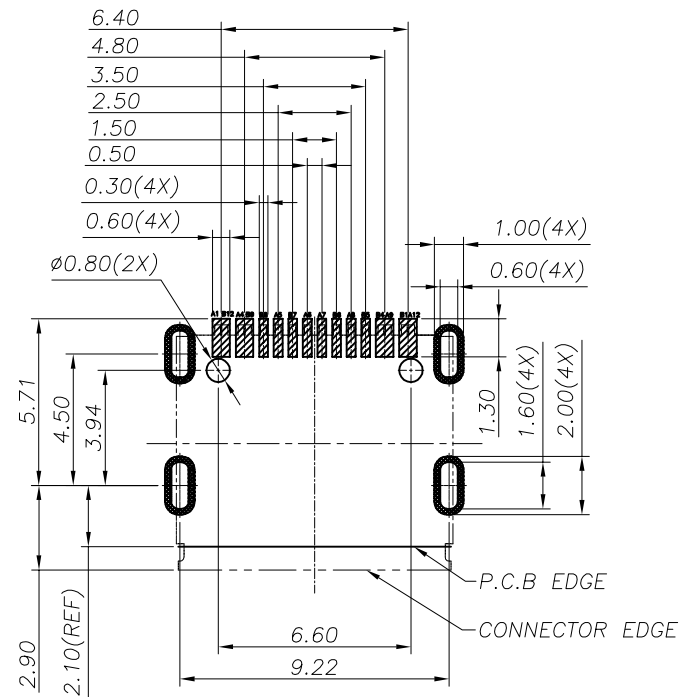
REVISIONS			
REV.	DESCRIPTION	DATE	DESIGN



AFTER MATING

USB TYPE-C PIN ASSIGNMENTS

PIN NUMBER	SIGNAL NAME	PIN NUMBER	SIGNAL NAME
A1	GND	B12	GND
A4	Vbus	B9	Vbus
A5	CC1	B8	SBU2
A6	Dp1	B7	Dn2
A7	Dn1	B6	Dp2
A8	SBU1	B5	CC2
A9	Vbus	B4	Vbus
A12	GND	B1	GND



RECOMMENDED PCB LAYOUT(TOP VIEW)

TABLE 1

ITEM	P/N	HOUSING COLOR	CONTACTS		SHELL PLATING	DIM"A"
			FUNCTIONAL AREA	SOLDER AREA		
1	U06-CF2C5R-A012	BLACK	Au:3u"	Au:G/F	Ni	1.33
2	U06-CF2C2R-A012	WHITE	Au:3u"	Au:G/F	Ni	1.33
3	U06-CF2C5R-A112	BLACK	Au:3u"	Au:G/F	Ni	0.91

Bestcreate Technology Limited

TOLERANCES UNLESS OTHERWISE SPECIFIED:

X.	± 0.30	X.°	± 10°
.X	± 0.20	.X°	± 8°
.XX	± 0.10	.XX°	± 5°

Website: www.bsc-elec.com
E-mail: bestcreate@bsc-elec.com

DESIGN: I. L DATE: 2017. 3. 1

CHECKED: C. W DATE: 2017. 3. 1

APPROVED: C. W DATE: 2017. 3. 1

TITLE: USB C F 16PIN SMT CH=5.9

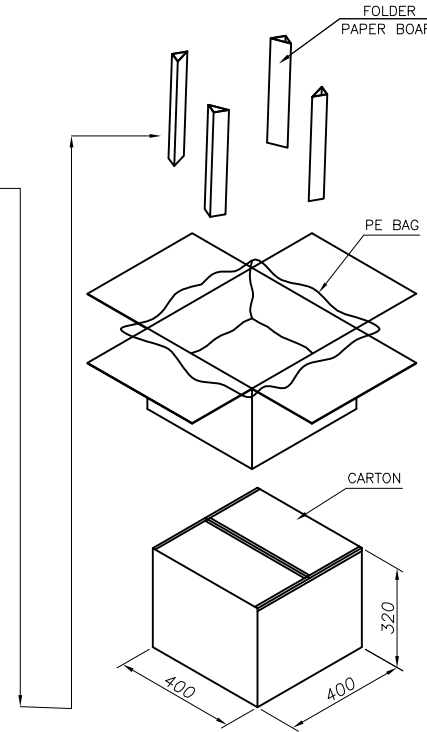
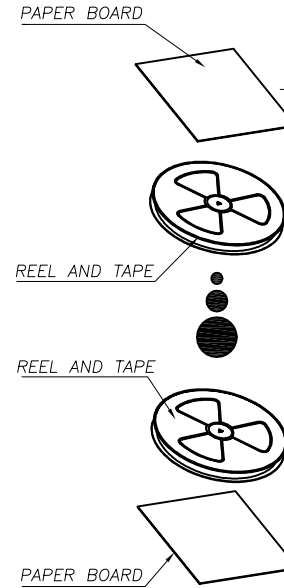
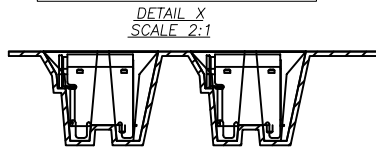
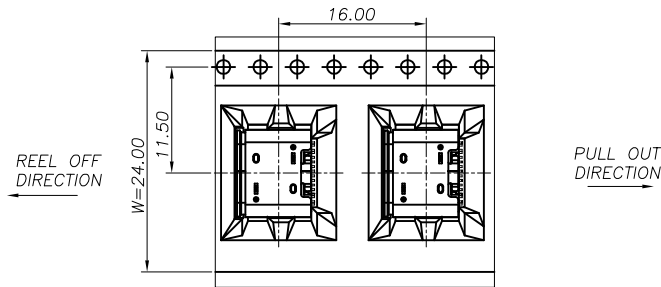
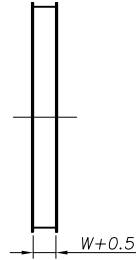
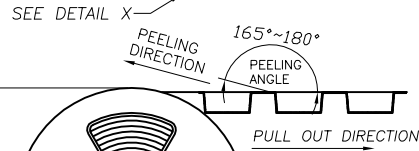
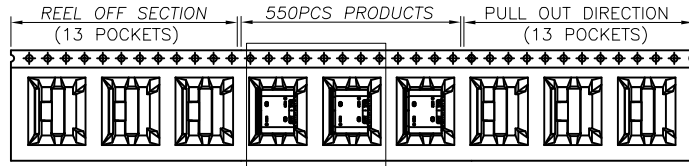
MATERIAL: PART NO: U06-CFXX5R-A012 SIZE: A4

FINSH: DWG NO: U06-CFXX5R-A012 SHEET: 2 OF 3

REV: A UNIT mm SCALE 1=1 QUALITY SYMBOLS

RoHS Compliant

REVISIONS			
REV.	DESCRIPTION	DATE	DESIGN



	REEL	CARTON
CONNECTOR (PCS)	550	5500

Bestcreate Technology Limited

TOLERANCES UNLESS OTHERWISE SPECIFIED:

X.	± 0.30	X.*	$\pm 10^{\circ}$
.X	± 0.20	.X*	$\pm 8^{\circ}$
.XX	± 0.10	.XX*	$\pm 5^{\circ}$

Website: www.bsc-elec.com
E-mail: bestcreate@bsc-elec.com

DESIGN: I. L
DATE: 2017. 3. 1

CHECKED: C. W
DATE: 2017. 3. 1

APPROVED: C. W
DATE: 2017. 3. 1

TITLE: USB C F 16PIN SMT CH=5.9

MATERIAL: PART NO: U06-CFXX5R-A012 SIZE: A4

FINSH: DWG NO: U06-CFXX5R-A012 SHEET: 3 OF 3

REV: A	UNIT mm	SCALE 1=1	QUALITY SYMBOLS
--------	---------	-----------	-----------------

1

2

3

4

5

6

7

8