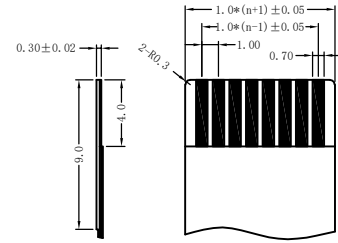
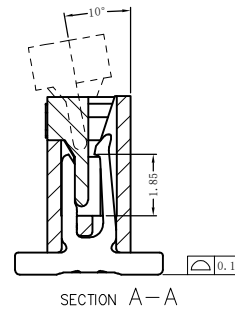
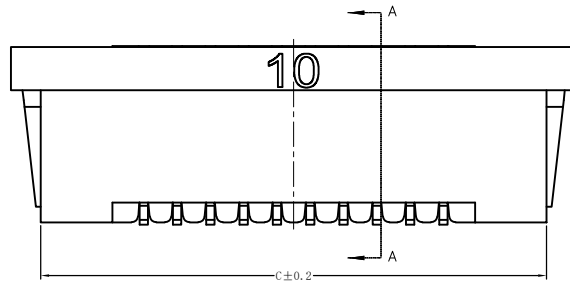
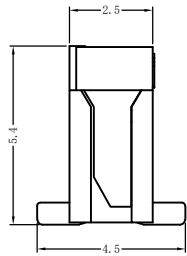
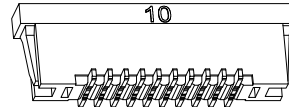
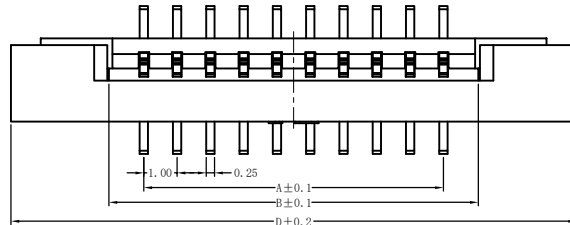


RoHS Compliant

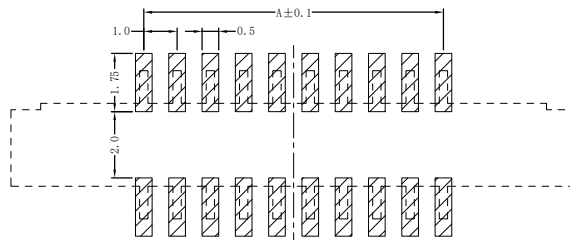
REVISIONS			
REV.	DESCRIPTION	DATE	DESIGN

技术要求 (Technical Index):

1. 材质与表面处理 (Material And Finish):  
 底座 (Housing) and 盖子 (Cover): LCP UL94V-0 Nature Or Black;  
 端子 (Terminal): Phosphor Copper Au/Sn Plated;  
 焊片 (Solder): Copper Alloy Au/Sn Plated;
2. 工作温度 (Temperature range):  $-25^{\circ}\text{C} \sim +85^{\circ}\text{C}$ .
3. 额定电压 (Rated voltage): 50V, AC/DC.
4. 额定电流: 0.5A, AC/DC.
5. 接触电阻 (Contact resistance):  $\leq 20\text{m}\Omega$ .
6. 绝缘电阻 (Insulation resistance):  $\geq 800\text{M}\Omega$ .
7. 耐电压 (Withstanding Voltage): 500V AC/minute.



PROPER CABLE (SCALE 2:1)



PART NO. INFORMATION

**FPC10-XX 0 1 X - B009**

- NO. OF CONTACTS: XX
- PLATING: 0: TIN, G: GOLD FLASH
- PACKAGE: T:TUBE, R:TAPE&REEL
- 1:ROHS, 2: HALOGEN FREE

孔位	A	B	C	D
6	5	7.15	11.20	13.10
8	7	9.15	13.20	15.10
10	9	11.15	15.20	17.10
12	11	13.15	17.20	19.10
14	13	15.15	19.20	21.10
15	14	16.15	20.20	22.10
16	15	17.15	21.20	23.10
18	17	19.15	23.20	25.10
20	19	21.15	25.20	27.10
22	21	23.15	27.20	29.10
24	23	25.15	29.20	31.10
25	24	26.15	30.20	32.10
26	25	27.15	31.20	33.10
28	27	29.15	33.20	35.10
29	28	30.15	34.20	36.10
30	29	31.15	35.20	37.10

**Bestcreate Technology Limited**

TOLERANCES UNLESS OTHERWISE SPECIFIED:

.X	$\pm 0.50$	X.*	$\pm 2'$
.XX	$\pm 0.20$	.X*	$\pm 1'$
.XXX	$\pm 0.05$	.XX*	$\pm 0.5'$

Website: [www.bsc-elec.com](http://www.bsc-elec.com)  
 Email: [bestcreate@bsc-elec.com](mailto:bestcreate@bsc-elec.com)

DESIGN: I. L DATE: 2017. 3. 1

CHECKED: C. W DATE: 2017. 3. 1

APPROVED: C. W DATE: 2017. 3. 1

TITLE: 1.0MM FPC CONNECTOR VERTICAL SMT TYPE

MATERILA:	PART NO: FPC10-XXX1X-B009	SIZE: A4
FINSH:	DWG NO: FPC10-XXX1X-B009	

REV: A	UNIT mm	SCALE 1=1	QUALITY SYMBOLS
--------	---------	-----------	-----------------