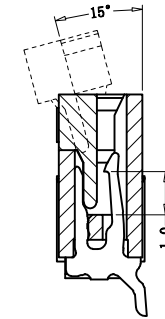
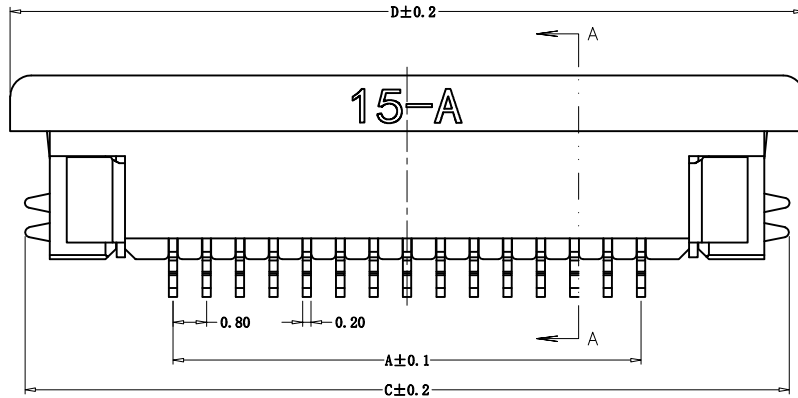
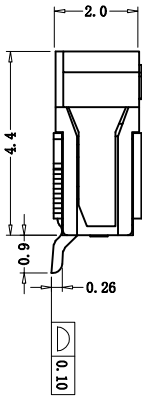
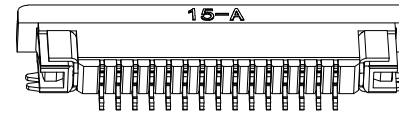
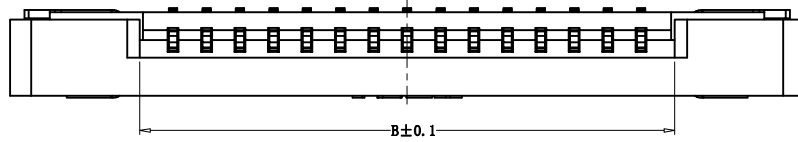


RoHS Compliant

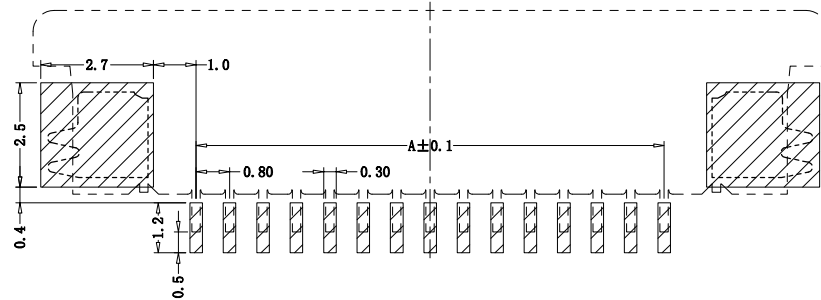
REVISIONS			
REV.	DESCRIPTION	DATE	DESIGN

(Technical Index):

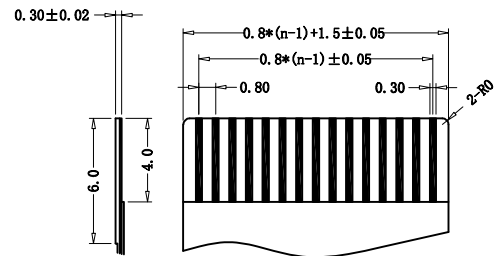
- (Material And Finish):  
 (Housing and (Cover): LCP UL94V-0 Nature Or Black;  
 (Terminal) :Phosphor Copper Au/Sn Plated;  
 (Solder) : Copper Alloy Au/Sn Plated;
- (Temperature range): -25° C~+85° C.
- (Rated voltage): 50V, AC/DC.
- : 0.4A, AC/DC.
- (Contact resistance): ≤20mΩ.
- (Insulation resistance): ≥500MΩ.
- (Withstanding Voltage): 200V AC/minute.



SECTION A-A



PC BOARD LAYOUT



PROPER CABLE (SCALE 2:1)

PART NO. INFORMATION

**FPC08-XX X 1 X - C001**

NO. OF CONTACTS  
 PLATING  
 O: TIN  
 G: GOLD FLASH  
 PACKAGE  
 T:TUBE  
 R:TAPE&REEL  
 1:ROHS  
 2: HALOGEN FREE

孔位	A	B	C	D
4	2.4	4	9.6	10.3
5	3.2	4.8	10.4	11.1
6	4	5.6	11.2	11.9
7	4.8	6.4	12	12.7
8	5.6	7.2	12.8	13.5
9	6.4	8	13.6	14.3
10	7.2	8.8	14.4	15.1
11	8	9.6	15.2	15.9
12	8.8	10.4	16	16.7
13	9.6	11.2	16.8	17.5
14	10.4	12	17.6	18.3
15	11.2	12.8	18.4	19.1
16	12	13.6	19.2	19.9
17	12.8	14.4	20	20.7
18	13.6	15.2	20.8	21.5
19	14.4	16	21.6	22.3
20	15.2	16.8	22.4	23.1
21	16	17.6	23.2	23.9
22	16.8	18.4	24	24.7
23	17.6	19.2	24.8	25.5
24	18.4	20	25.6	26.3
25	19.2	20.8	26.4	27.1
26	20	21.6	27.2	27.9
27	20.8	22.4	28	28.7
28	21.6	23.2	28.8	29.5
29	22.4	24	29.6	30.3
30	23.2	24.8	30.4	31.1
31	24	25.6	31.2	31.9
32	24.8	26.4	32	32.7
33	25.6	27.2	32.8	33.5
34	26.4	28	33.6	34.3
35	27.2	28.8	34.4	35.1

**Bestcreate Technology Limited**

TOLERANCES UNLESS OTHERWISE SPECIFIED:

.X	± 0.50	X'	± 3'
.XX	± 0.20	.X'	± 2'
.XXX	± 0.05	.XX'	± 1'

Website:www.bsc-elec.com  
 Email:bestcreate@bsc-elec.com

DESIGN: I. L  
 DATE: 2017. 3. 1  
 CHECKED: C. W  
 DATE: 2017. 3. 1  
 APPROVED: C. W  
 DATE: 2017. 3. 1

TITLE: **0.8MM FPC BOTTOM CONTACT, H:2.0MM**

MATERILA: FPC08-XXX1X-C001  
 PART NO: FPC08-XXX1X-C001  
 SIZE: A4  
 FINSH: DWG NO: FPC08-XXX1X-C001

REV: A  
 UNIT: mm  
 SCALE: 1=1  
 QUALITY SYMBOLS