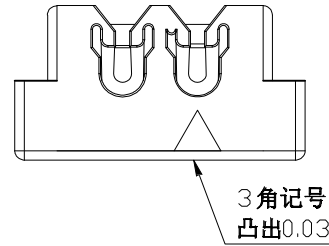
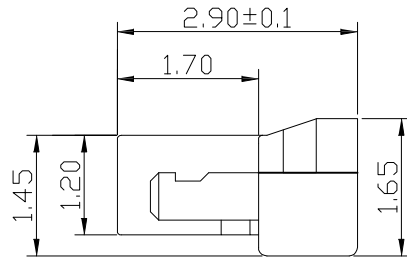
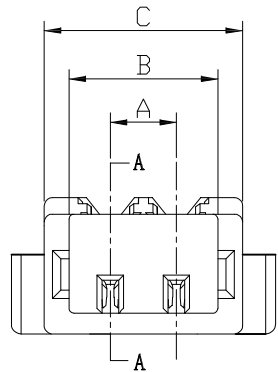


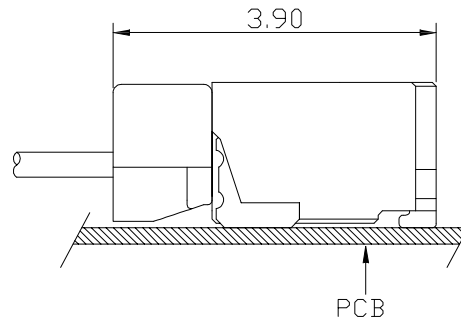
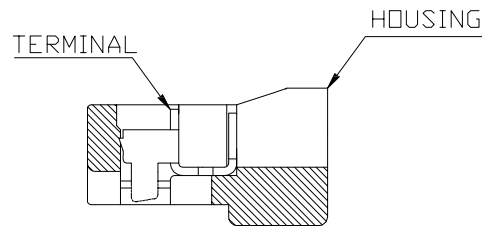
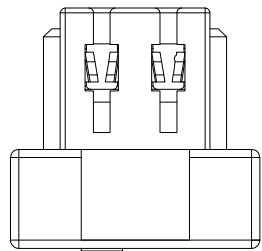
RoHS Compliant

REVISIONS			
REV.	DESCRIPTION	DATE	DESIGN



Specifications :

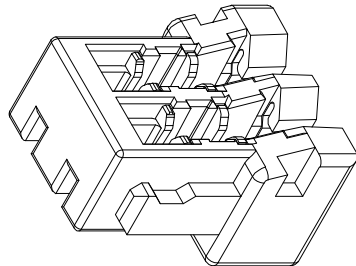
- Voltage rating: 30V AC / DC
- Current rating: 0.5A AC / DC
- Withstanding voltage: 200V AC/minute
- Temperature range: -25°C~+85°C
- Insulation resistance: ≥100MΩ
- Contact resistance: ≤20mΩ
- After environmental testing: ≤30mΩ



SECTION A-A

MATED CONDITION

Poles	Dimensions(mm)			Poles	Dimensions(mm)		
	A	B	C		A	B	C
02	0.80	1.80	2.40	10	7.20	8.20	8.80
03	1.60	2.60	3.20	11	8.00	9.00	9.60
04	2.40	3.40	4.00	12	8.80	9.80	10.40
05	3.20	4.18	4.80	13	9.60	10.60	11.20
06	4.00	5.00	5.60	14	10.40	11.40	12.00
07	4.80	5.80	6.40	15	11.20	12.20	12.80
08	5.60	7.00	7.20	16	12.00	13.00	13.60
09	6.40	7.40	8.00				



0800FI-XXEG-POHF	PA66 UL 94V-0 Halogen Free	AWG#32-34	0.38mm(Max)	Phosphor Bronze	Gold-Flash Tin-Plated	0800W
0800FI-XXEG-PO	PA66 UL 94V-0					
Part No.	Material	Wire Range	Insulation O.D.	Material(Terminal)	Finish(Terminal)	Mates With YTE Wafer

Bestcreate Technology Limited

TOLERANCES UNLESS OTHERWISE SPECIFIED:

.X	± 0.30	.X'	± 3'
.XX	± 0.20	.X''	± 2'
.XXX	± 0.10	.XXX'	± 1'

DESIGN: I.L
DATE: 2017. 3. 1

CHECKED: C.W
DATE: 2017. 3. 1

APPROVED: C.W
DATE: 2017. 3. 1

TITLE: 0.80 mm IDC Connectors

MATERILA: PART NO: 0800FI-XXEG-XX SIZE: A4

FINSH: DWG NO: 0800FI-XXEG-XX

REV: A UNIT mm SCALE 1=1 QUALITY SYMBOLS

Website:www.bsc-elec.com
Email:bestcreate@bsc-elec.com