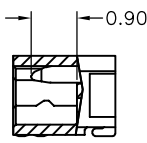
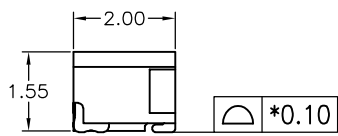
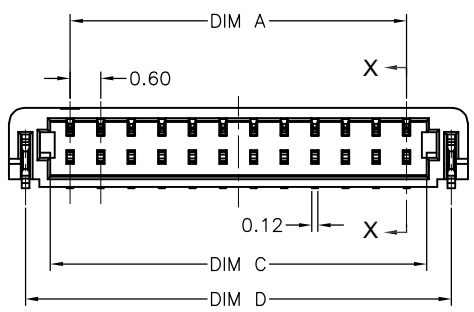
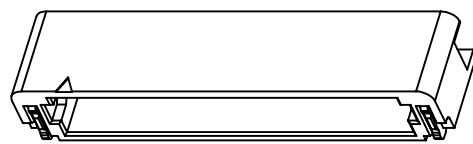
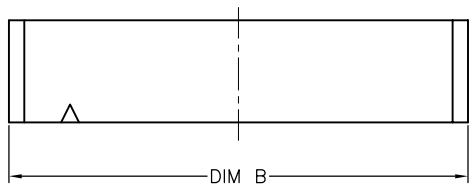
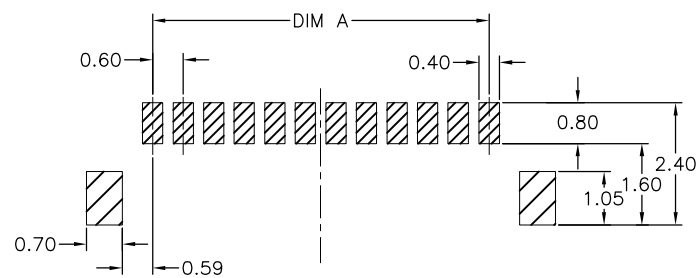


RoHS Compliant

REVISIONS			
REV.	DESCRIPTION	DATE	DESIGN



剖视X-X
Scale 1:1



NOTES:
 1.MATERIAL:
 1.1 HOUSING:THERMOPLASTIC,HIGH TEMP.,UL94V-0
 1.2 CONTACT:COPPER ALLOY
 1.3 NAIL:COPPER ALLOY
 2.FINISH:
 2.1 TERMINAL CONTACT:THE THICKNESS OF GOLD PLATING IS ACCORDING TO THE MATERIAL NUMBER

SOLDERING:50u"MIN.NICKEL UNDERPLATING OVERALL. GOLD FLASH PLATING.

2.2 PAD 50u"MIN.NICKEL UNDERPLATING OVERALL. GOLD FLASH PLATING.

3.PART NUMBER

WTB0616-XXXRA-BOXXR

002: 2Pin MS: MATT TIN
 A1: GOLD FLASH ON CONTACT
 020: 20Pin A3: 3u"GOLD ON CONTACT

No.	Dimensions				No.	Dimensions			
	A	B	C	D		A	B	C	D
2	0.60	3.00	1.38	2.35	12	6.60	9.00	7.38	8.35
3	1.20	3.60	1.98	2.95	13	7.20	9.60	7.98	8.95
4	1.80	4.20	2.58	3.55	14	7.80	10.20	8.58	9.55
5	2.40	4.80	3.18	4.15	15	8.40	10.80	9.18	10.15
6	3.00	5.40	3.78	4.75	16	9.00	11.40	9.78	10.75
7	3.60	6.00	4.38	5.35	17	9.60	12.00	10.38	11.35
8	4.20	6.60	4.98	5.95	18	10.20	12.60	10.98	11.95
9	4.80	7.20	5.58	6.55	19	10.80	13.20	11.58	12.55
10	5.40	7.80	6.18	7.15	20	11.40	13.80	12.18	13.15
11	6.00	8.40	6.78	7.75					

Bestcreate Technology Limited

TOLERANCES UNLESS OTHERWISE SPECIFIED:			
.X	± 0.25	X'	± 3'
.XX	± 0.20	.X'	± 2'
.XXX	± 0.15	.XX'	± 1'

Website:www.bsc-elec.com
 Email:bestcreate@bsc-elec.com

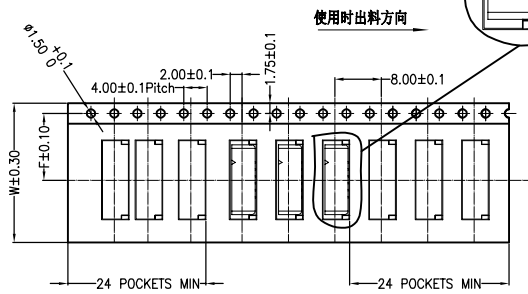
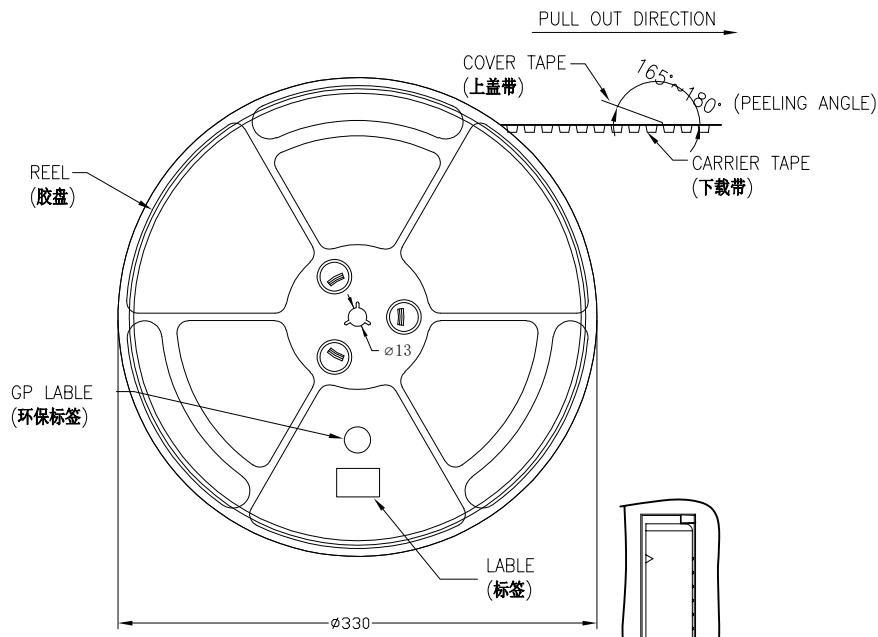
DESIGN:	DATE:
I. L	2017. 3. 1
CHECKED:	DATE:
C. W	2017. 3. 1
APPROVED:	DATE:
C. W	2017. 3. 1

TITLE: 0.6mm Pitch WTB SMT R/A TYPE		
MATERILA:	PART NO: WTB0616-XXXRA-BOXXR	SIZE: A4
FINSH:	DWG NO: WTB0616-XXXRA-BOXXR	SHEB: 1 OF 2

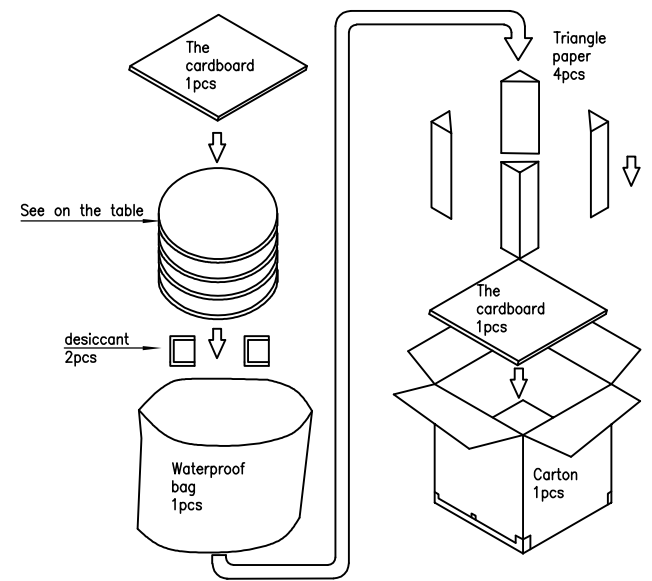
REV: A	UNIT mm	SCALE 1=1	QUALITY SYMBOLS
-----------	------------	--------------	-----------------

RoHS Compliant

REVISIONS			
REV.	DESCRIPTION	DATE	DESIGN



- Note:
- 1.10 sprocket hole pitch cumulative tolerance ± 0.2
 2. Carrier camber is within 1 mm in 250mm.
 3. Material: transparent Conductive Polystyrene Alloy 100% recyclable.
 4. All dimensions meet EIA-481-B requirements.
 5. Thickness: 0.30 ± 0.05 mm.
 6. Component load per 13" reel: 4500 pcs.
 7. The following specifications are shown in the table below
 8. Carton Size: 350x350x340mm



Circuits	DIM. W	DIM. F	Q'ty/Reel	Packing (Reel/Carton)
02~04	12.0	5.5	4500PCS	19/Reel
05~08	16.0	7.5	4500PCS	15/Reel
10~16	24.0	11.5	4500PCS	10/Reel

Bestcreate Technology Limited

TOLERANCES UNLESS OTHERWISE SPECIFIED:

.X	± 0.25	.X'	$\pm 3'$
.XX	± 0.20	.X''	$\pm 2'$
.XXX	± 0.15	.X'''	$\pm 1'$

Website: www.bsc-elec.com
Email: bestcreate@bsc-elec.com

DESIGN:	DATE:
I. L	2017. 3. 1
CHECKED:	DATE:
C. W	2017. 3. 1
APPROVED:	DATE:
C. W	2017. 3. 1

TITLE:		
0.6mm Pitch WTB SMT R/A TYPE		
MATERILA:	PART NO:	SIZE:
	WTB0616-XXXRA-BOXXR	A4
FINSH:	DWG NO:	SHEE:
	WTB0616-XXXRA-BOXXR	2 OF 2

REV: A	UNIT mm	SCALE 1=1	QUALITY SYMBOLS
--------	---------	-----------	-----------------