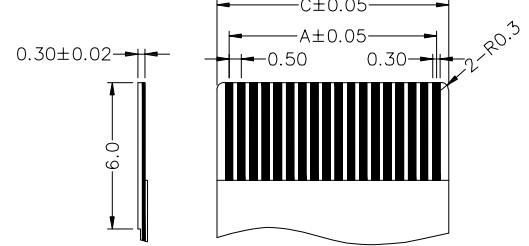
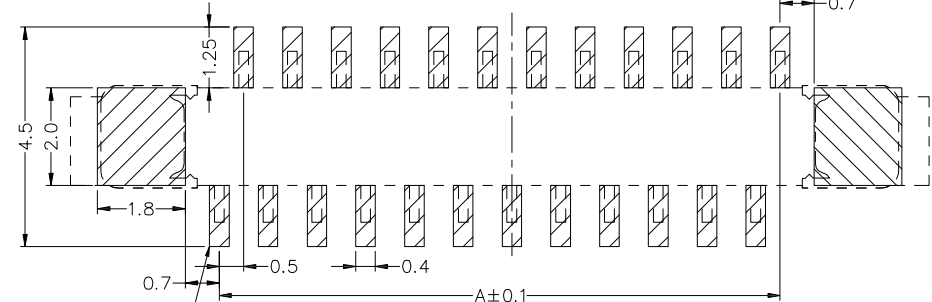
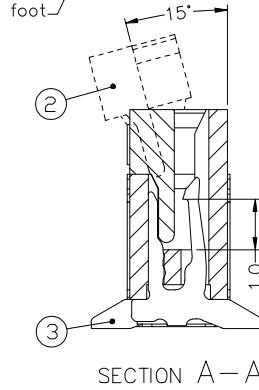
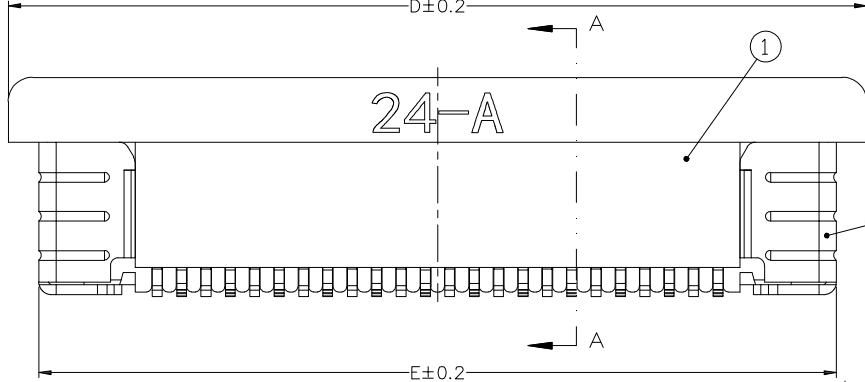
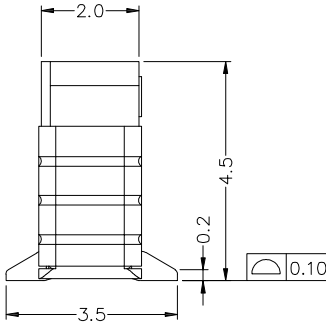
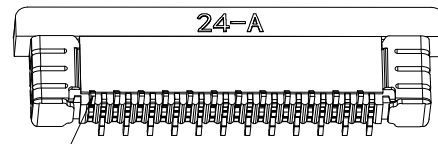
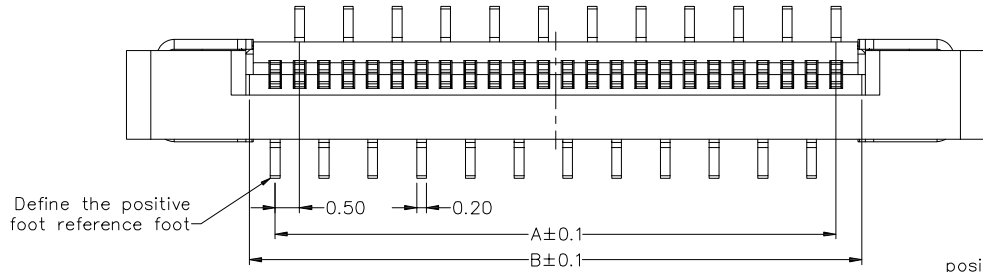


RoHS Compliant

REVISIONS			
REV.	DESCRIPTION	DATE	DESIGN



PROPER CABLE (SCALE 2:1)

PIN	DIM A	DIM B	DIM C	DIM D	DIM E
4	1.50	2.60	2.50	7.60	6.35
5	2.00	3.10	3.00	8.10	6.85
6	2.50	3.60	3.50	8.60	7.35
7	3.00	4.10	4.00	9.10	7.85
8	3.50	4.60	4.50	9.60	8.35
9	4.00	5.10	5.00	10.10	8.85
10	4.50	5.60	5.50	10.60	9.35
11	5.00	6.10	6.00	11.10	9.85
12	5.50	6.60	6.50	11.60	10.35
13	6.00	7.10	7.00	12.10	10.85
14	6.50	7.60	7.50	12.60	11.35
15	7.00	8.10	8.00	13.10	11.85
16	7.50	8.60	8.50	13.60	12.35
17	8.00	9.10	9.00	14.10	12.85
18	8.50	9.60	9.50	14.60	13.35
19	9.00	10.10	10.00	15.10	13.85
20	9.50	10.60	10.50	15.60	14.35
21	10.00	11.10	11.00	16.10	14.85
22	10.50	11.60	11.50	16.60	15.35
23	11.00	12.10	12.00	17.10	15.85
24	11.50	12.60	12.50	17.60	16.35
25	12.00	13.10	13.00	18.10	16.85
26	12.50	13.60	13.50	18.60	17.35
27	13.00	14.10	14.00	19.10	17.85
28	13.50	14.60	14.50	19.60	18.35
29	14.00	15.10	15.00	20.10	18.85
30	14.50	15.60	15.50	20.60	19.35
31	15.00	16.10	16.00	21.10	19.85
32	15.50	16.60	16.50	21.60	20.35
33	16.00	17.10	17.00	22.10	20.85
34	16.50	17.60	17.50	22.60	21.35
35	17.00	18.10	18.00	23.10	21.85
36	17.50	18.60	18.50	23.60	22.35
37	18.00	19.10	19.00	24.10	22.85
38	18.50	19.60	19.50	24.60	23.35
39	19.00	20.10	20.00	25.10	23.85
40	19.50	20.60	20.50	25.60	24.35
41	20.00	21.10	21.00	26.10	24.85
42	20.50	21.60	21.50	26.60	25.35
43	21.00	22.10	22.00	27.10	25.85
44	21.50	22.60	22.50	27.60	26.35
45	22.00	23.10	23.00	28.10	26.85
46	22.50	23.60	23.50	28.60	27.35
47	23.00	24.10	24.00	29.10	27.85
48	23.50	24.60	24.50	29.60	28.35
49	24.00	25.10	25.00	30.10	28.85
50	24.50	25.60	25.50	30.60	29.35
51	25.00	26.10	26.00	31.10	29.85
52	25.50	26.60	26.50	31.60	30.35
53	26.00	27.10	27.00	32.10	30.85
54	26.50	27.60	27.50	32.60	31.35
55	27.00	28.10	28.00	33.10	31.85
56	27.50	28.60	28.50	33.60	32.35
57	28.00	29.10	29.00	34.10	32.85
58	28.50	29.60	29.50	34.60	33.35
59	29.00	30.10	30.00	35.10	33.85
60	29.50	30.60	30.50	35.60	34.35
61	30.00	31.10	31.00	36.10	34.85
62	30.50	31.60	31.50	36.60	35.35
63	31.00	32.10	32.00	37.10	35.85
64	31.50	32.60	32.50	37.60	36.35

Define the positive foot reference foot

PC BOARD LAYOUT

Electrical
 rated current:0.4A AC(rms)/DC
 nominal voltage:50V AC(rms)/DC
 Dielectric Withstanding Voltage:200V AC/rms
 Contact Resistance:≤20mΩ max(initial)
 Insulation Resistance:500 MΩ min
 Operating Temp:-20°C~+85°C

PART NO. INFORMATION

FPC05-XX 0 1 X -B001

NO. OF CONTACTS →
 PLATING →
 0: TIN
 G: GOLD FLASH
 PACKAGE
 T:TUBE
 R:TAPE&REEL
 1:ROHS
 2: HALOGEN FREE

④	FITTING	PHOSPHOR BRONZE	PDR-05-SK
③	TERMINAL	PHOSPHOR BRONZE	PDR-05-RL/R
②	LATCH	LCP(BLACK)UL94V-0	05A-NA
①	HOUSING	LCP(NATURAL)UL94V-0	05A-NY
SERIAL NUMBER	NAMER	MATERIALS	PART NUMBER

Bestcreate Technology Limited

TOLERANCES UNLESS OTHERWISE SPECIFIED:			
.X	± 0.50	.X'	± 2'
.XX	± 0.20	.X'	± 1'
.XXX	± 0.05	.X'	± 0.5'

Website:www.bsc-elec.com
 Email:bestcreate@bsc-elec.com

DESIGN:	DATE:
I. L	2017. 3. 1
CHECKED:	DATE:
C. W	2017. 3. 1
APPROVED:	DATE:
C. W	2017. 3. 1

TITLE: 0.5mm FPC立贴正脚		
MATERILA:	PART NO: FPC05-XX01X-B001	SIZE: A4
FINSH:	DWG NO: FPC05-XX01X-B001	

REV: A	UNIT mm	SCALE 1=1	QUALITY SYMBOLS
--------	---------	-----------	-----------------